



## 29 Aylesbury Crescent GLADSTONE PARK VIC

3 1 2

Located on 533 m2 approx. this beautifully maintained 3 Bedroom Family Home is ideally located with only a short walk to Gladstone Park Shopping Centre, Schools and Public Transport.

Offering Large Master Bedroom with Built-In-Robe, and all other bedrooms with Built-In-Robes, Large L Shape Lounge, Open Design Kitchen/Meals with Smeg Appliances, Separate Laundry, Separate Toilet, Cedar Family Bathroom with Separate Shower Recess and Spa Bath, Front and Rear Fully Established Gardens, Outdoor Undercover Entertainment Area, and Double.

Features Include Fixed Floor Coverings, Light Fittings, Window Furnishings, Gas Ducted Heating, Evaporative Cooling, Ceiling Fans, SMEG Hotplates Wall Oven

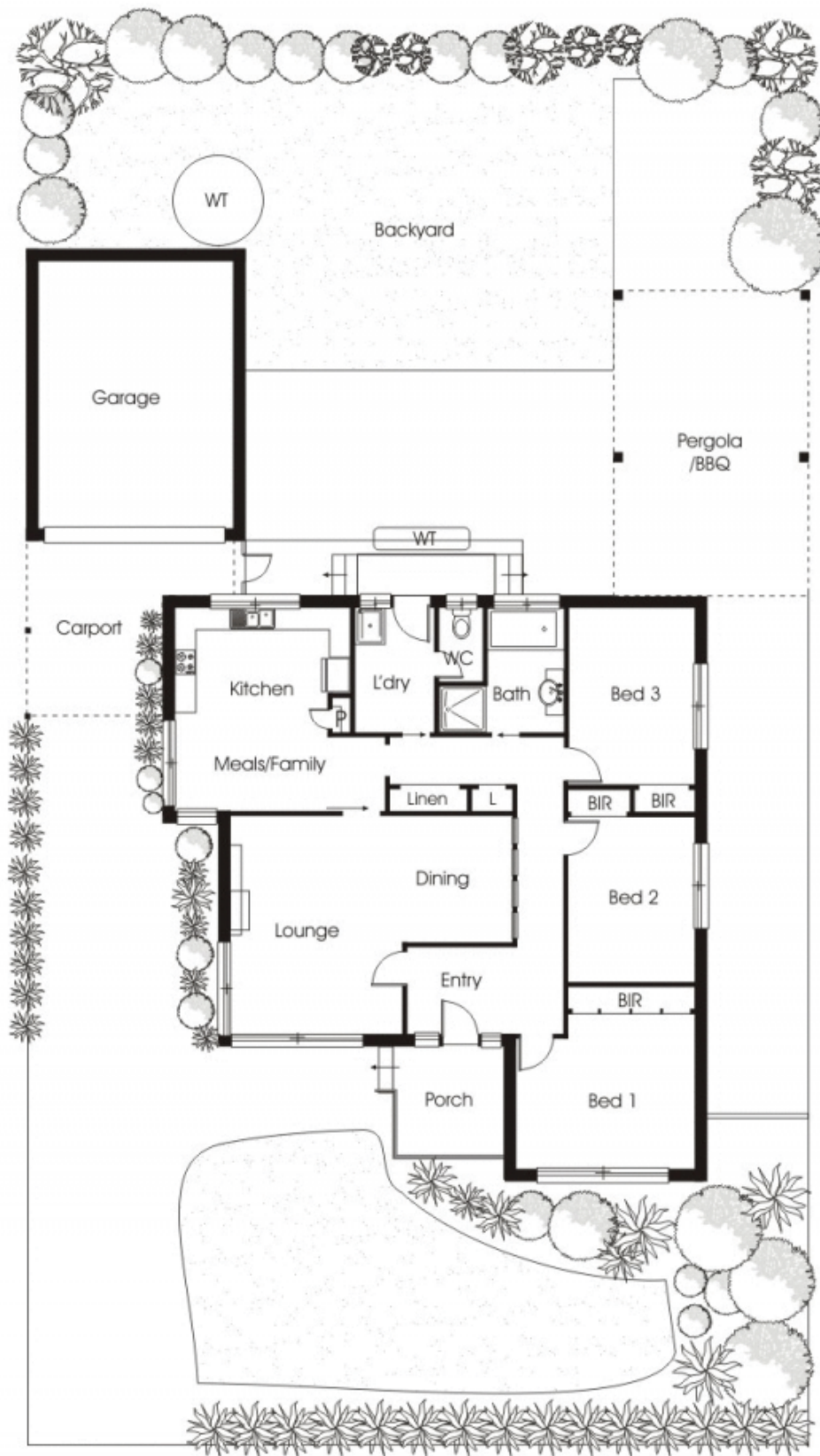
**Type** : House

**View** : <https://www.jasonrealestate.com.au/sale/vic/north/gladstone-park/residential/house/7329283>



**Jason Sassine**  
03 9338 6411

[For full version visit the website](#)



29 Aylesbury Crescent Gladstone Park