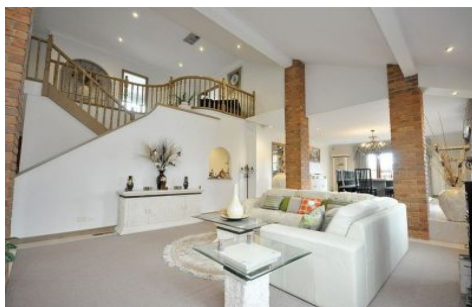




## Double Storey Living - Blue Chip Location



**5 Murray Close GREENVALE VIC**

4 3 3

Magnificently situated on 1809m<sup>2</sup> of landscaped gardens; in a coveted pocket in Greenvale, only walking distance to schools, shops and transport. Offering unparalleled lifestyle of family living is this double storey home.

A spacious entry foyer welcomes you to an inviting gracious sitting room with high ceilings and leadlight windows and doors. Step up to a stunning dining room, well-appointed kitchen boasting quality modern appliances and ample cupboard space. Adjoining is the spacious meals area, a large relaxed family room with Coonara heater and built in bar.

The home has four double sized bedrooms, the main with walk in robes and full ensuite with spa bath. The other three bedrooms all have built in robes and share of a large central bathroom. The home also has a study or a 5th

**Type** : House  
**Building Size** : 7 sqm  
**Land Size** : 1809 sqm  
**View** : <https://www.jasonrealestate.com.au/sale/vic/north/greenvale/residential/house/7329642>



**Jason Sassine**  
 03 9338 6411

[For full version visit the website](https://www.jasonrealestate.com.au)



Disclaimer: Please note floor plans are indicative only not drawn to exact scale. All dimensions are approximate. Potential buyers should view the property in person.

5 Murray Court Greenvale



Disclaimer: Please note floor plans are indicative only not drawn to exact scale. All dimensions are approximate. Potential buyers should view the property in person.

5 Murray Court Greenvale