

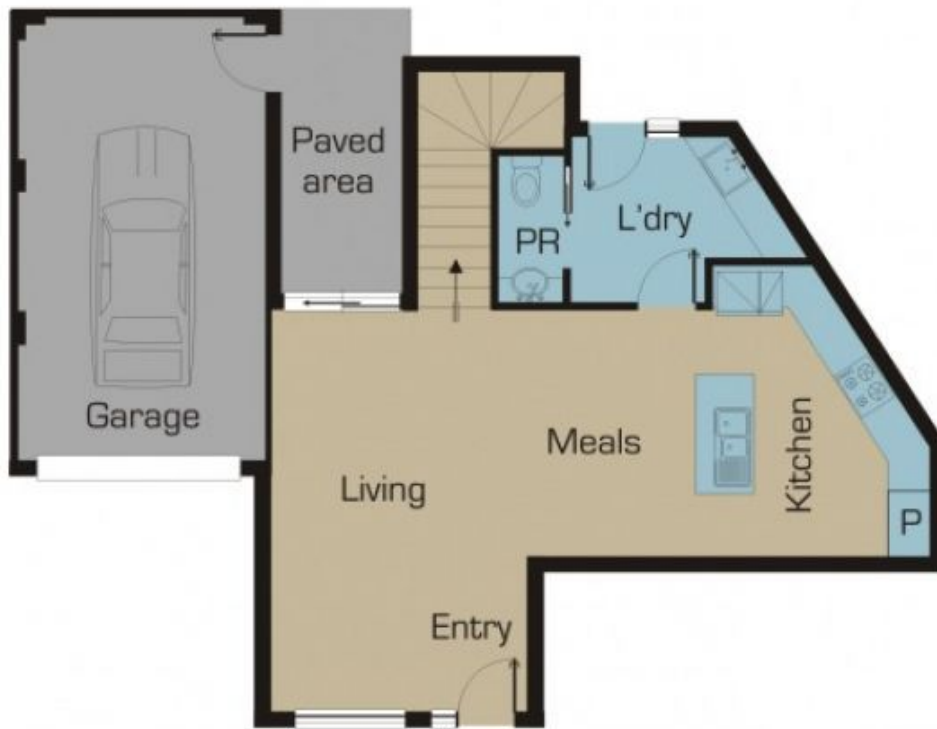


2/24 Vaucluse Avenue GLADSTONE PARK VIC

2 1 1

Beautifully appointed brand new townhouse is a serene, light-filled haven positioned in a quiet street. Exquisite tiled entrance welcomes you to a brilliant open plan living. Sophisticated kitchen complete with stone bench tops and stainless steel appliances and sizable meals area. Lovely wooden staircase leads to two sizeable bedrooms both with built-in robes and a luxury central bathroom with floor-to-ceiling tiles. Other features include; two split systems, downstairs powder room, roller blinds, landscaped private courtyard and remote single car garage. This brand new townhouse has everything for you, nothing left to do but move in and enjoy as all the hard work has been done for you.

Type : Townhouse
Building Size : 12 sqm
Land Size : 130 sqm
View : <https://www.jasonrealestate.com.au/sale/vic/north/gladstone-park/residential/townhouse/7329668>



Ground Floor

Disclaimer: Please note floor plans are indicative only not drawn to exact scale. All dimensions are approximate. Potential buyers should view the property in person.

2/24 Vacluse Avenue Gladstone Park



First Floor

Disclaimer: Please note floor plans are indicative only not drawn to exact scale. All dimensions are approximate. Potential buyers should view the property in person.

2/24 Vacluse Avenue Gladstone Park