



## 15 Kelvin Close NIDDRIE VIC

4 2 2

Positioned in a court location and opposite parklands and vine yards this magnificent Double Storey home with magnificent scenic views is set on a huge allotment measuring 872 sq. metres approx. with great potential for unit development (STCA).

Featuring 3 great size bedrooms plus study/4th bedroom, full ensuite & WIR's to master bedroom, step down family living room, updated kitchen overlooking a generous meals area plus a large entertaining rumpus/billiard room downstairs.

Renovated second bathroom, roomy laundry plus cellar/store room and double garage with internal access.

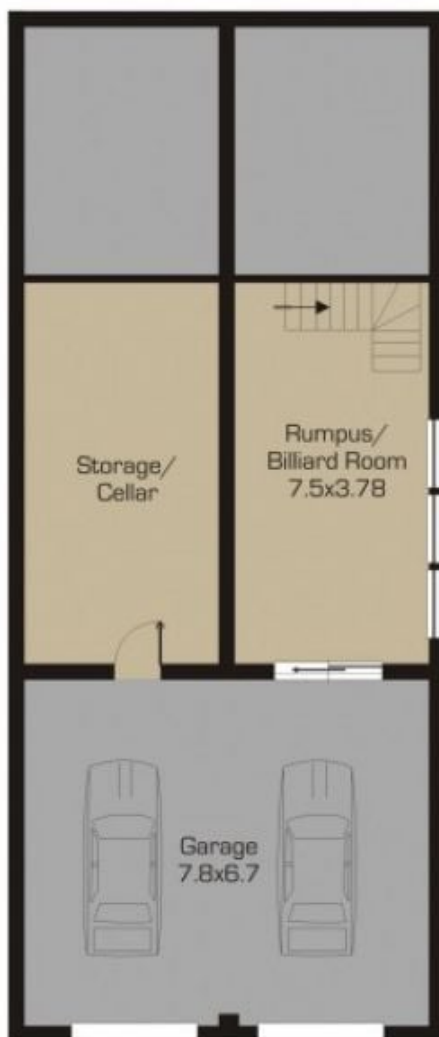
**Type** : House  
**Land Size** : 867 sqm  
**View** : <https://www.jasonrealestate.com.au/sale/vic/north/niddrie/residential/house/7329683>



First Floor

Disclaimer: Please note floor plans are indicative only not drawn to exact scale. All dimensions are approximate. Potential buyers should view the property in person.

15 Kelvin Close Niddrie



## Ground Floor

Disclaimer: Please note floor plans are indicative only not drawn to exact scale. All dimensions are approximate. Potential buyers should view the property in person.

15 Kelvin Close Niddrie