



6 Cupar Place GREENVALE VIC

4 3 6

Secluded in a quiet court location in the premier Elphinstone Boulevard Precinct, this classic red clinker brick family home of generous proportions is set on a huge 4,000 sq. meters approx. of manicured landscaped gardens and is complete with heated in ground pool and tennis court.

Type : House
Land Size : 4040 sqm
View : <https://www.jasonrealestate.com.au/sale/vic/north/greenvale/residential/house/7329818>

Designed for families that love to entertain inside and out, the home's expansive floor plan of superior quality features 3meter high ceilings, four generous size bedrooms, plus study, separate parents retreat room to master bedroom, ensuite and WIR's, two additional bathrooms, multiple living zones including step down formal lounge with gas fire place, formal dining room, new kitchen with stone bench



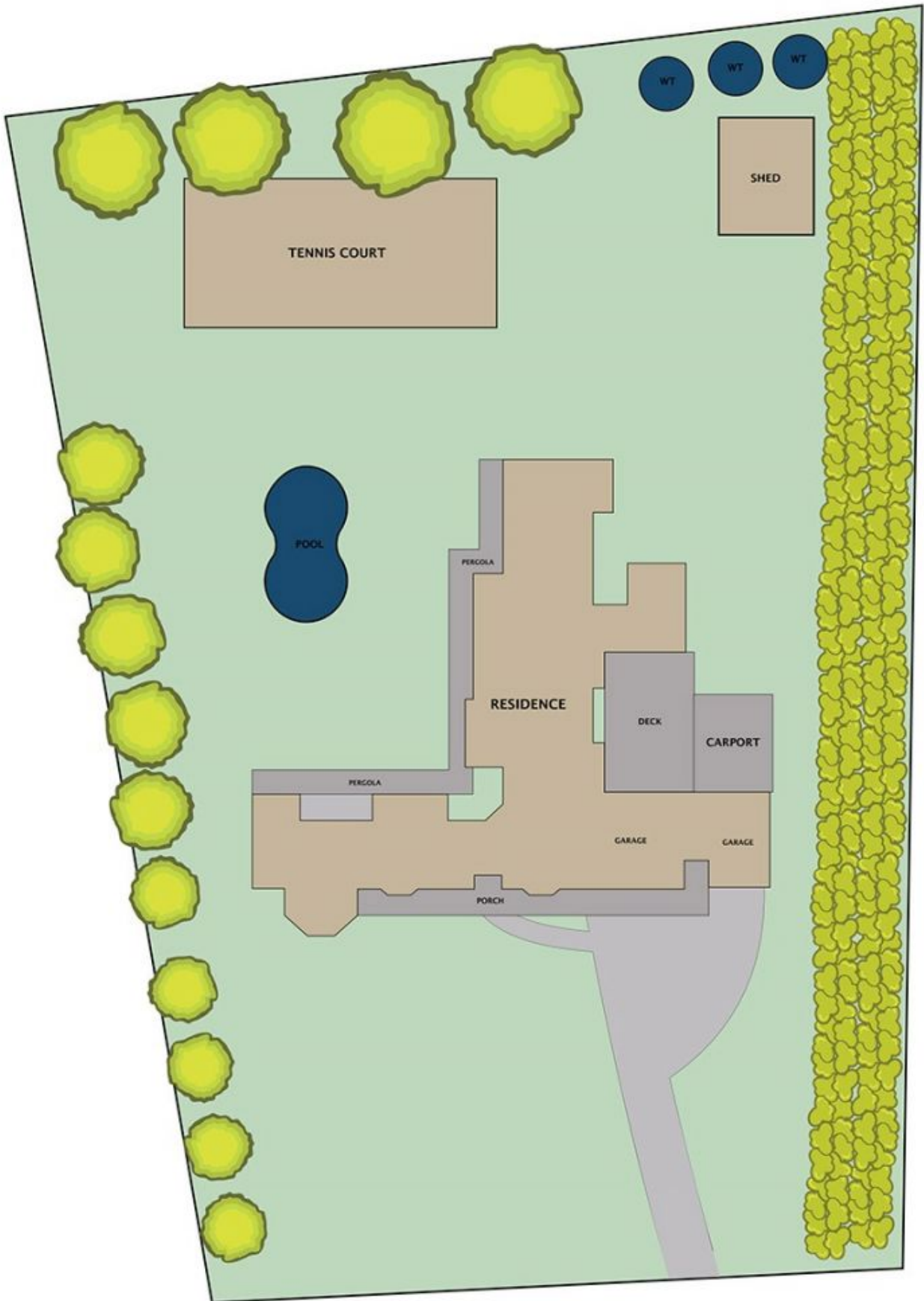
Jason Sassine
03 9338 6411

[For full version visit the website](https://www.jasonrealestate.com.au)



Disclaimer. Please note plans are indicative only and not drawn to exact scale. All dimensions are approximate. Potential buyers view the property in person.

6 Cupar Close Greenvale



Disclaimer. Please note plans are indicative only and not drawn to exact scale. All dimensions are approximate. Potential buyers view the property in person.

6 Cupar Close Greenvale