



1 Churchill Avenue TULLAMARINE VIC

3 1 2

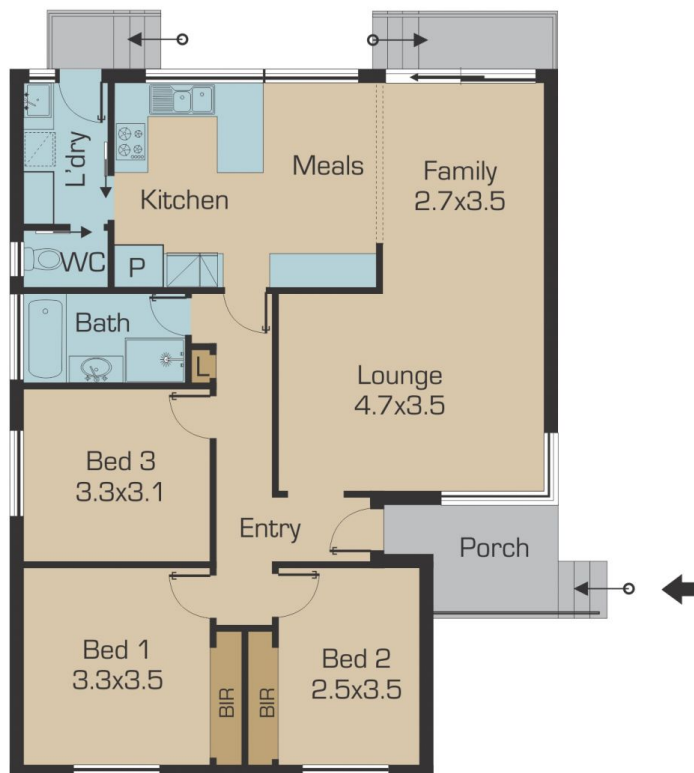
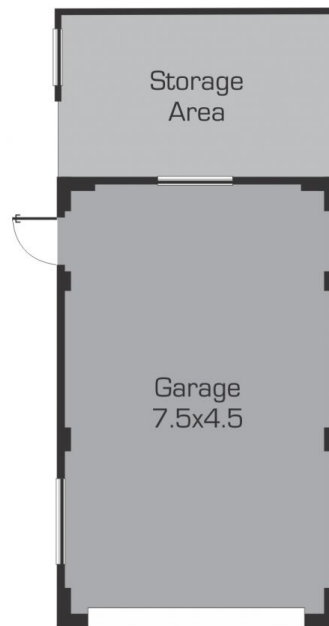
Finally, one of Tullamarine's finer homes is up for grabs. This brick veneer family home is conveniently located to shops, schools and transport.

Featuring: 3 great sized bedrooms, separate entrance leading to a large size lounge room with polished floorboards, well-appointed kitchen with ample cupboard space overlooking a great sized family/meals area, updated bathroom with bath and a good sized laundry with cupboard space. Step outside to a large sized backyard, huge side driveway leading to a powered lock up garage or simply convert to your own man cave. All this set on a magnificent sized allotment measuring 540m2.

Fixtures and fittings include: Ducted heating, ceiling fan, cooling system, gas hot plates, under bench oven, range

Type : House
Land Size : 540 sqm
View : <https://www.jasonrealestate.com.au/sale/vic/north/tullamarine/residential/house/7329821>

[For full version visit the website](https://www.jasonrealestate.com.au)



Disclaimer: Please note floor plans are indicative only not drawn to exact scale. All dimensions are approximate. Potential buyers should view the property in person.

1 Churchill Avenue Tullamarine