

53 Churchill Avenue TULLAMARINE VIC

4 1 1

Nestled behind the picket fence is this large family home sitting on a 537 sqm approx. with a 23 metres frontage ideal for townhouses (stca)

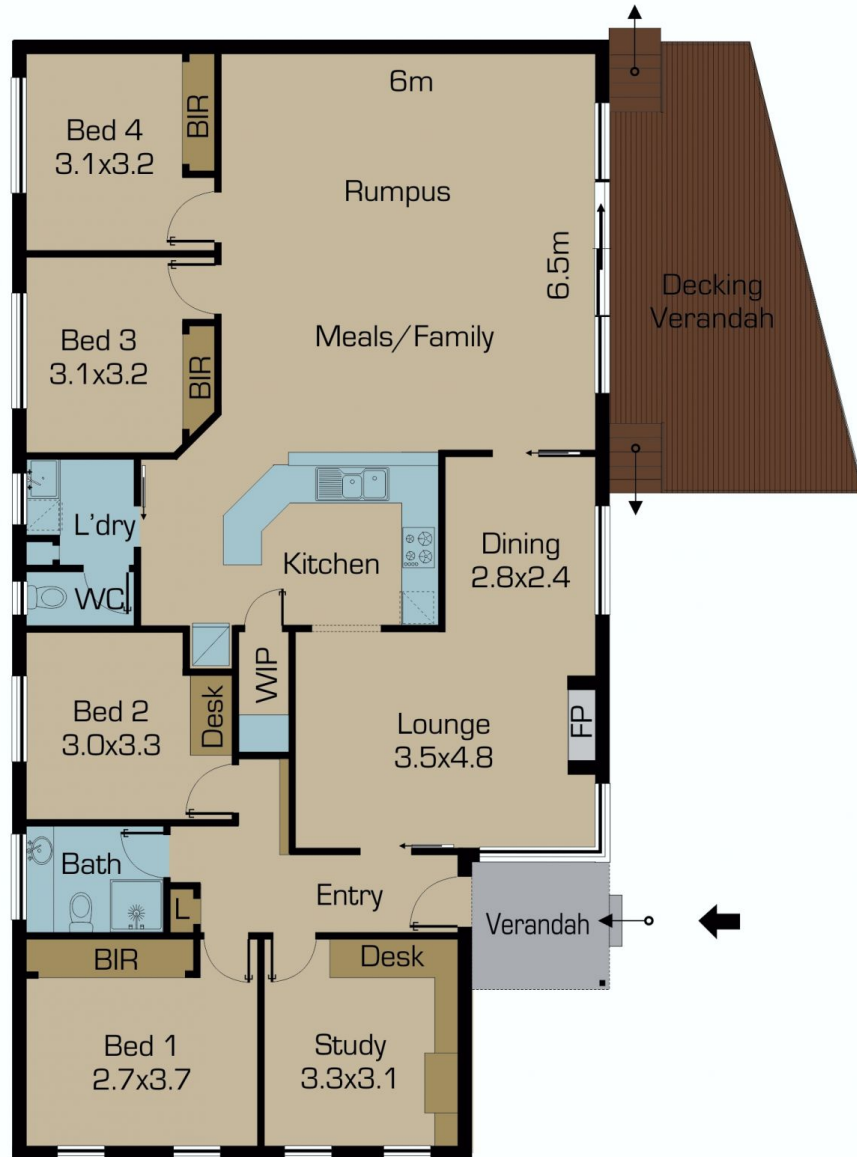
in one of Tullamarine finest locations, with excellent accommodation for the growing family.

The home offers four bedrooms all with bir's, study or fifth bedroom, formal lounge, open plan kitchen overlooking the HUGE family/entertainment/rumpus room, central bathroom and two toilets.

Features include hydronic heating, cooling, polished floor boards, fans, and a sun deck. Only minutes drive to schools, shops, public transport and Westfield Shopping Centre, with easy access to CBD Via Freeway and Ring Road.

Type : House
Land Size : 537 sqm
View : <https://www.jasonrealestate.com.au/sale/vic/north/tullamarine/residential/house/7329875>

[For full version visit the website](https://www.jasonrealestate.com.au)



Disclaimer: Please note floor plans are indicative only not drawn to exact scale. All dimensions are approximate. Potential buyers should view the property in person.

53 Churchill Avenue Tullamarine