



3 Rockley Road MICKLEHAM VIC

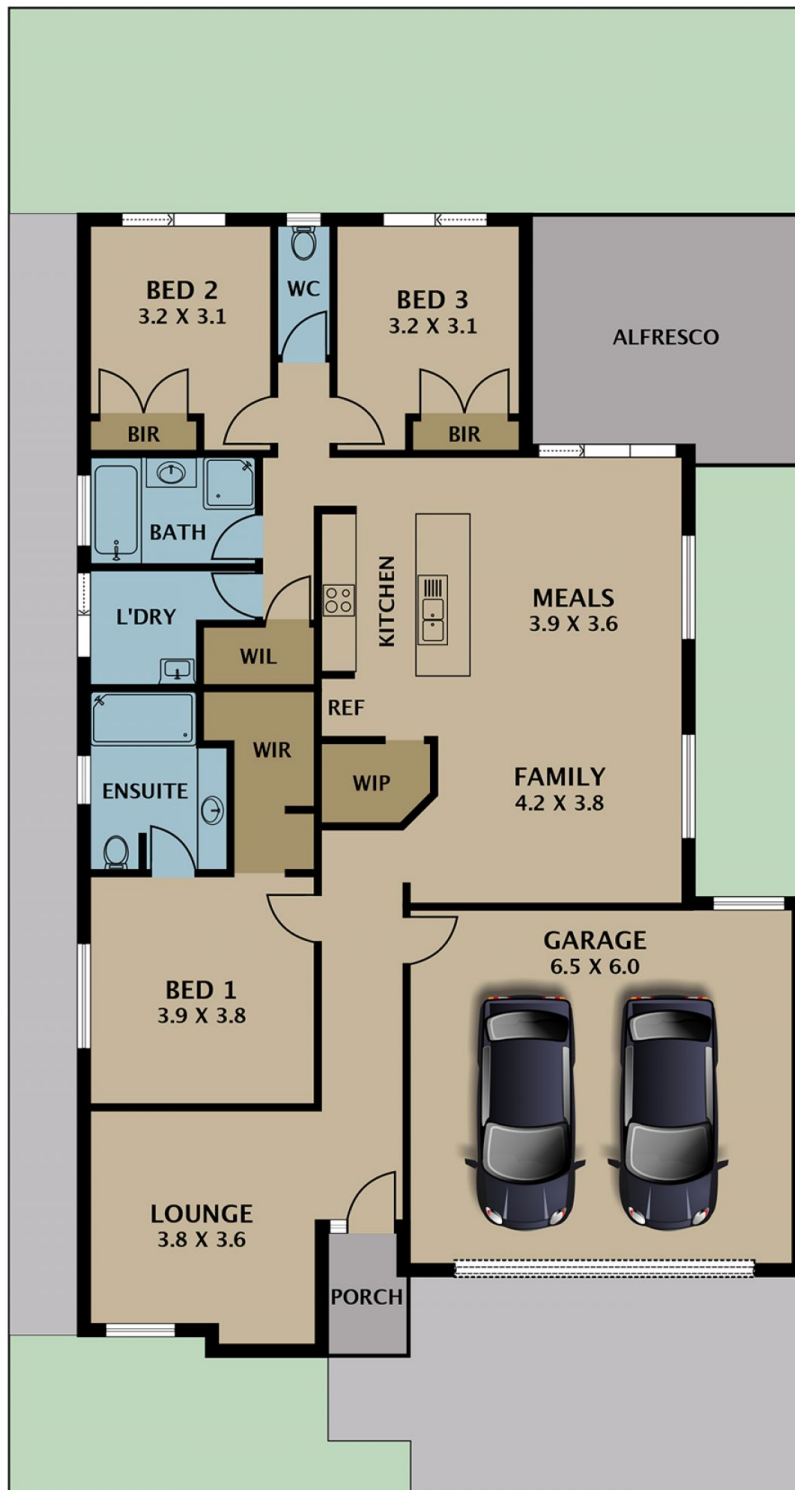
3 2 3

Luxurious and appealing in presence; this stunning ex display home measuring 24 Sq's approx in the ever popular Merrifield Estate features an attention to detail on a level seldom seen. Built by the very reputable Nostra homes, this residence strikes the perfect balance between modern luxury and family living.

Building Size : 24 sqm
Land Size : 452 sqm
View : <https://www.jasonrealestate.com.au/sale/vic/north/mickleham/residential/house/7329921>

The functional floorplan expertly caters to every living requirement and more. A timeless modern ambience with a vast open plan living area, gourmet kitchen with extensive stone bench tops, walk in pantry, 900mm stove top, island canopy range hood and dishwasher, island bench overlooking a generous meals/family area and a spacious formal lounge.

Three impressive robed bedrooms; master with full double vanity ensuite and WIR's while the remaining two



Disclaimer. Please note plans are indicative only and not drawn to exact scale. All dimensions are approximate. Potential buyers view the property in person.

3 Rockley Road Mickleham