



1 Linlithgow Way GREENVALE VIC

3  2  2 

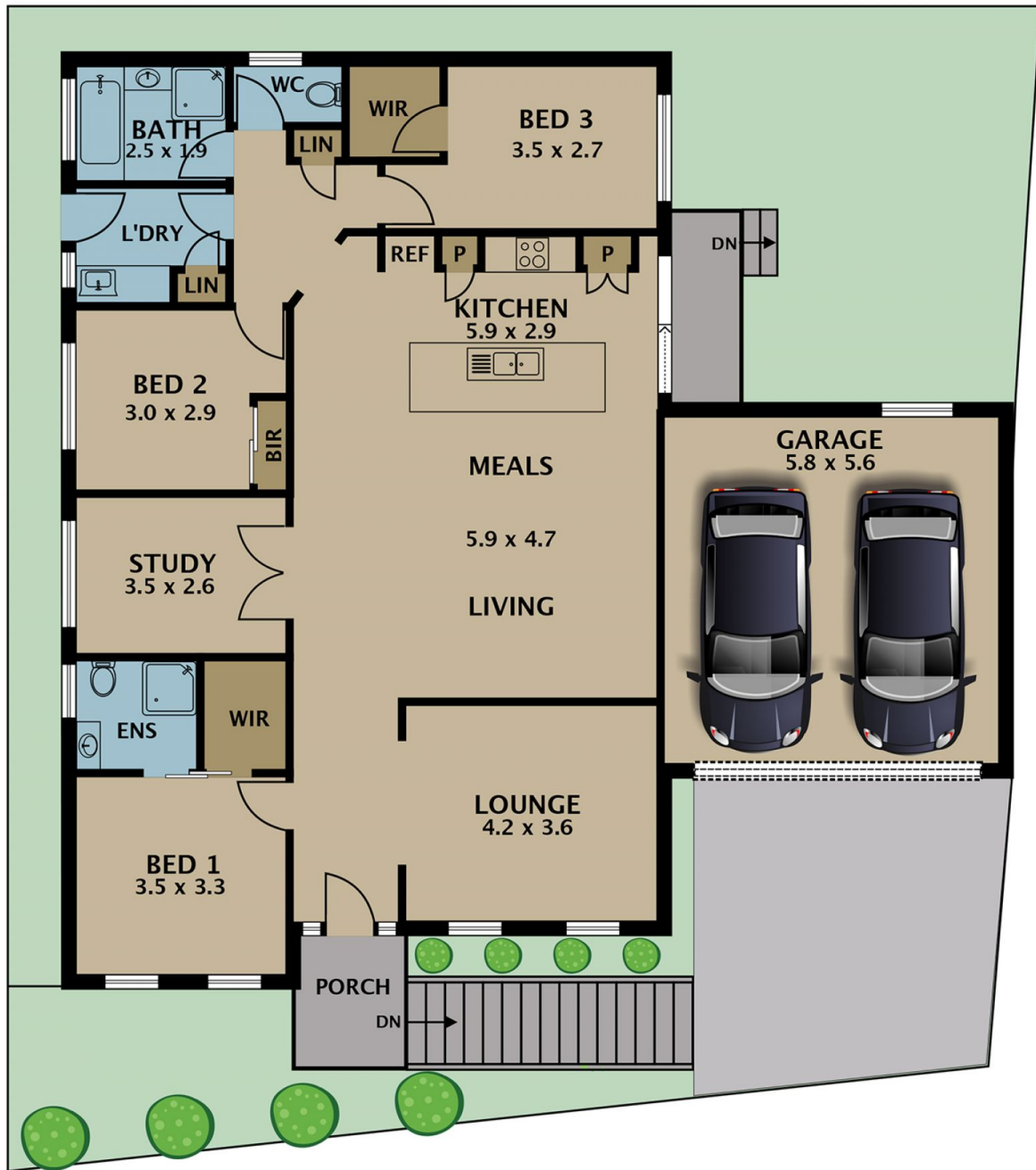
Positioned in the established and leafy side of Greenvale this unique residence offers a relaxed and rewarding lifestyle perfect for market entrants, young families, downsizers and the astute investor looking to secure a home with modern living complimented with a timeless feel.

**Type** : House  
**Land Size** : 340 sqm  
**View** : <https://www.jasonrealestate.com.au/sale/vic/north/greenvale/residential/house/7330037>

Commanding in its presence with amazing views, the residence introduces the grand master bedroom with WIR's and full ensuite, remaining bedrooms with BIR's and WIR's, study/4th bedroom, formal living area (second living), luxurious kitchen offering Granite finishes and an island bench perfect for family breakfasts which overlooks a generous meals/family area, central bathroom with separate WC, spacious laundry with external access, remote double lock up garage and more!

[For full version visit the website](#)

<https://www.jasonrealestate.com.au>



Disclaimer. Please note plans are indicative only and not drawn to exact scale. All dimensions are approximate. Potential buyers view the property in person.

# 1 Linlithgow Way Greenvale