



30 Chapman Avenue GLENROY VIC

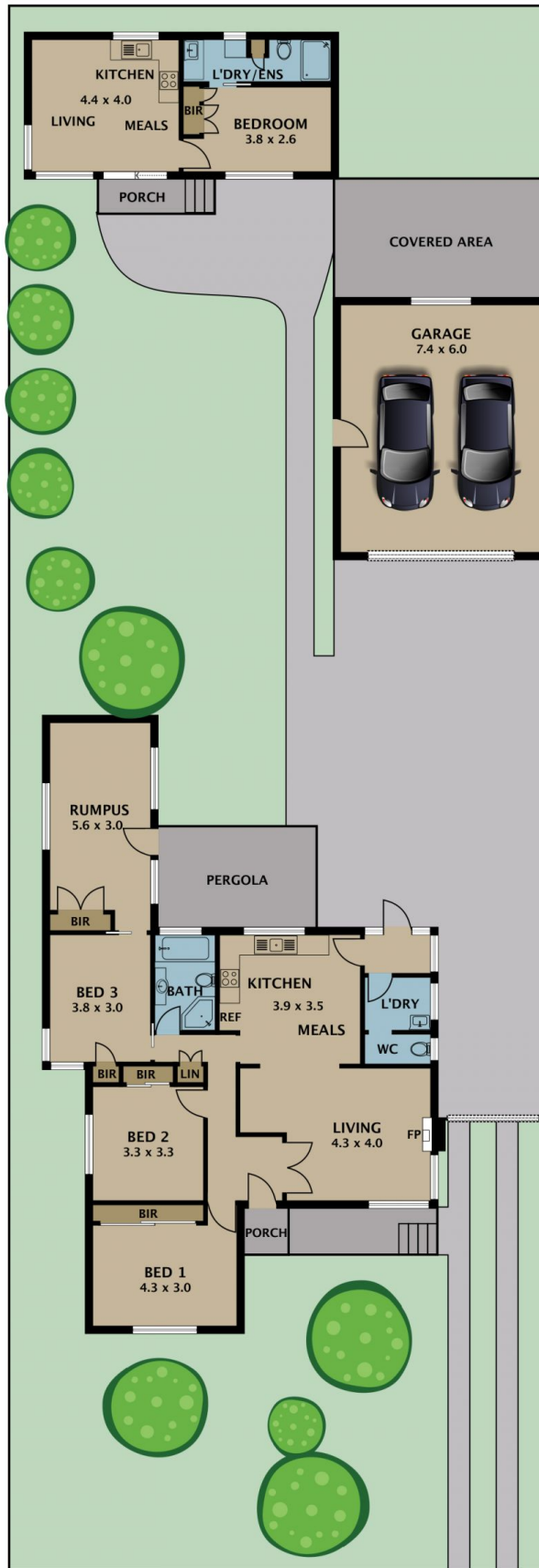
4 2 2

Greeting you with a warm welcome, and appealing facade, this excellent family home is easy to appreciate with its adaptable floor plan offering comfort alongside remarkable opportunities to renovate, rebuild or redevelop (STCA) in one of Glenroy's most favorable pockets, and sitting on an expansive 842m² (approx) allotment. This could easily be your next best project or investment opportunity. This carefully up kept dwelling is a first near the Oak Park outskirts which should see townhouse resales achieve a greater return.

This home is complimented with timber flooring, three great sized bedrooms, central bathroom, kitchen with 900mm upright stove overlooking the meals area. Relax in a formal lounge with a charming fireplace, and a bonus extended

Type : House
Land Size : 842 sqm
View : <https://www.jasonrealestate.com.au/sale/vic/north/glenroy/residential/house/7330038>

[For full version visit the website](https://www.jasonrealestate.com.au)



Disclaimer. Please note plans are indicative only and not drawn to exact scale. All dimensions are approximate. Potential buyers view the property in person.

30 Chapman Avenue Glenroy