



16 Lauren Court EPPING VIC

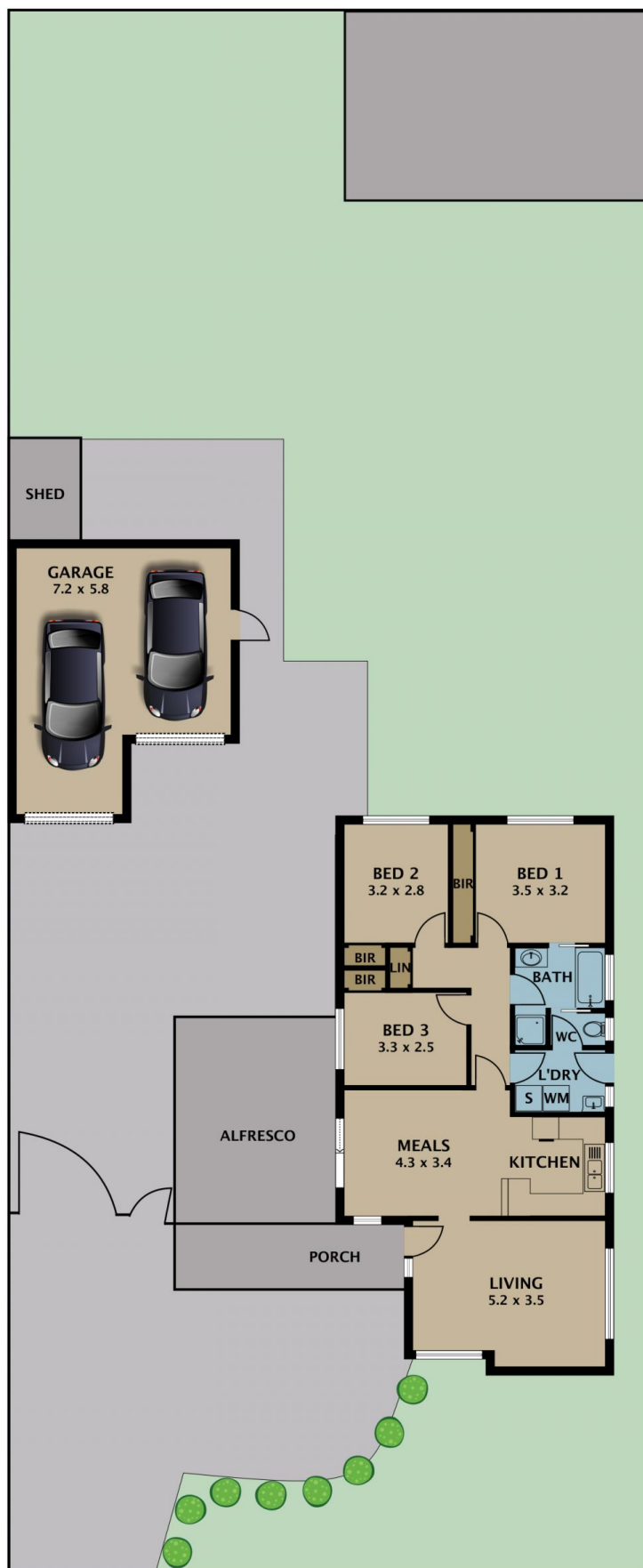
3 1 3

Positioned in the established side of Epping and in a quiet court location, this unique residence offers a relaxed and rewarding lifestyle perfect for market entrants, young families, downsizers and the astute investor looking to secure a home with updated living comfortably sitting on an immense parcel of 764m2 approx.

The home's spacious interior comprises three generous bedrooms, tastefully renovated main bathroom with main bedroom access, formal lounge nurturing plenty of natural light, bright well-equipped kitchen overseeing the meals area which leads to an entertaining area complete with decking and private backyard with plenty of room for the kids and pets, separate double lock up garage and more.

Type : House
Land Size : 764 sqm
View : <https://www.jasonrealestate.com.au/sale/vic/north/epping/residential/house/7330047>

[For full version visit the website](https://www.jasonrealestate.com.au)



Disclaimer. Please note plans are indicative only and not drawn to exact scale. All dimensions are approximate. Potential buyers view the property in person.

16 Lauren Court Epping