



## 10 Inspiration Way GREENVALE VIC

4 2 2

Nestled in the sought-after pocket of 'Aspect Estate' with lovely parks and walking tracks close by, this immaculately 39 sq. Carlisle built family home is set on a generous 546m<sup>2</sup> allotment and features a fabulous range of living zones designed for elite entertainment and quiet relaxation.

A grand entrance foyer with high ceilings and superior timber engineered floors throughout this substantial home is complete with four bedrooms, two bathrooms plus powder room, three separate living areas, study adjacent to the entrance, well-equipped galley kitchen, covered patio overlooking gardens, separate laundry, and double lock-up garage.

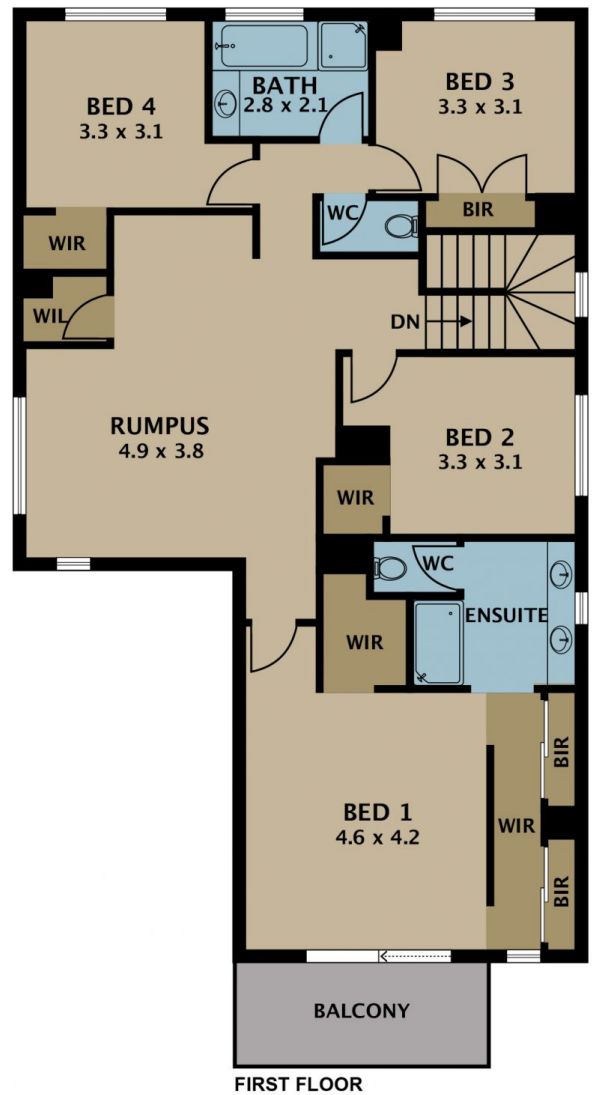
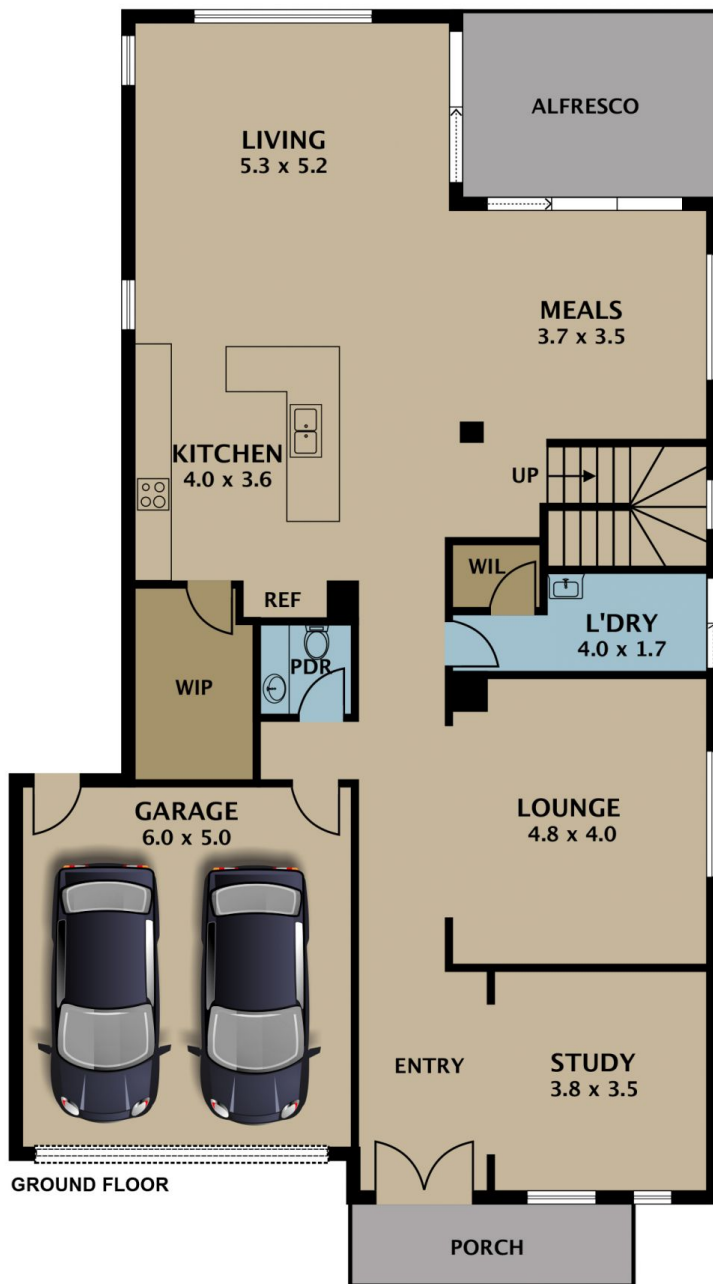
The decor is well-designed and stylish; features include

[For full version visit the website](https://www.jasonrealestate.com.au)

**Type** : House  
**Building Size** : 4 sqm  
**Land Size** : 546 sqm  
**View** : <https://www.jasonrealestate.com.au/sale/vic/north/greenvale/residential/house/7330083>



**Jason Sassine**  
 03 9338 6411



Disclaimer. Please note plans are indicative only and not drawn to exact scale. All dimensions are approximate. Potential buyers view the property in person.

# 10 Inspiration Way Greenvale