



16 Bologna Crescent GREENVALE VIC

4 2 2

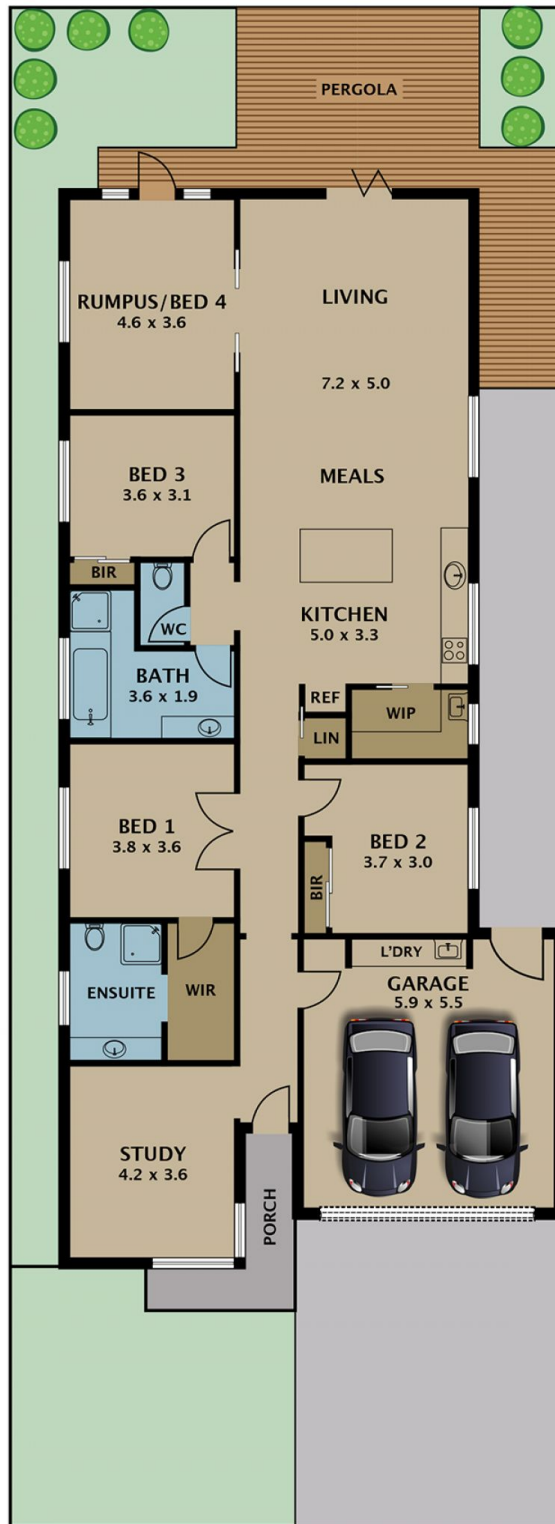
This gorgeous family home located in a quiet neighbourhood of the 'Providence Estate', and just footsteps away from the award-winning Napoli Park, offers a well-designed floorplan on a single level, an outdoor entertaining area, quality features and fittings, all on a low maintenance 425sqm allotment approx.

This impeccable home is complete with four great sized bedrooms, two elegant bathrooms, two separate living areas, study adjacent to entrance, well-equipped kitchen with a butler's pantry, European laundry, a low maintenance backyard with artificial grass, a double lock up garage and so much more.

Perfectly positioned on the northern outskirts of Greenvale,

[For full version visit the website](https://www.jasonrealestate.com.au)

Type : House
Land Size : 425 sqm
View : <https://www.jasonrealestate.com.au/sale/vic/north/greenvale/residential/house/7330102>



Disclaimer. Please note plans are indicative only and not drawn to exact scale. All dimensions are approximate. Potential buyers view the property in person.

16 Bologna Crescent Greenvale