



## 24 Scampton Crescent TULLAMARINE VIC

4 2 3

This solid double storey brick and tile home, circa 1976, in this coveted neighbourhood, has been meticulously cared for by its original owner and showcases many charming retro features throughout that will delight aficionados of homes of this vintage; and offers plenty of potentials to update and value-add.

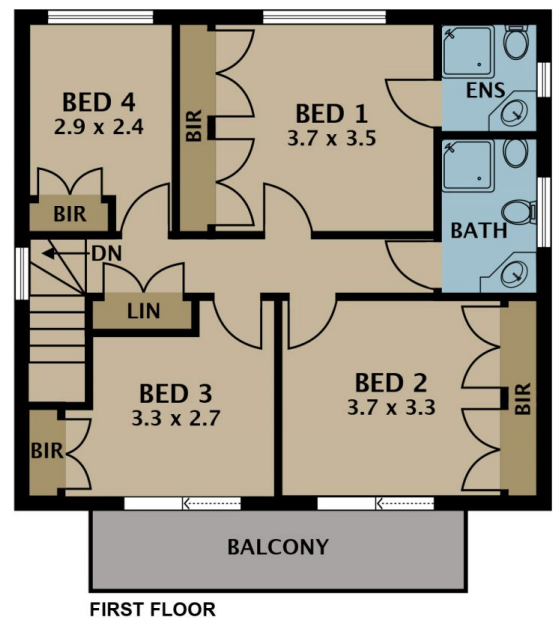
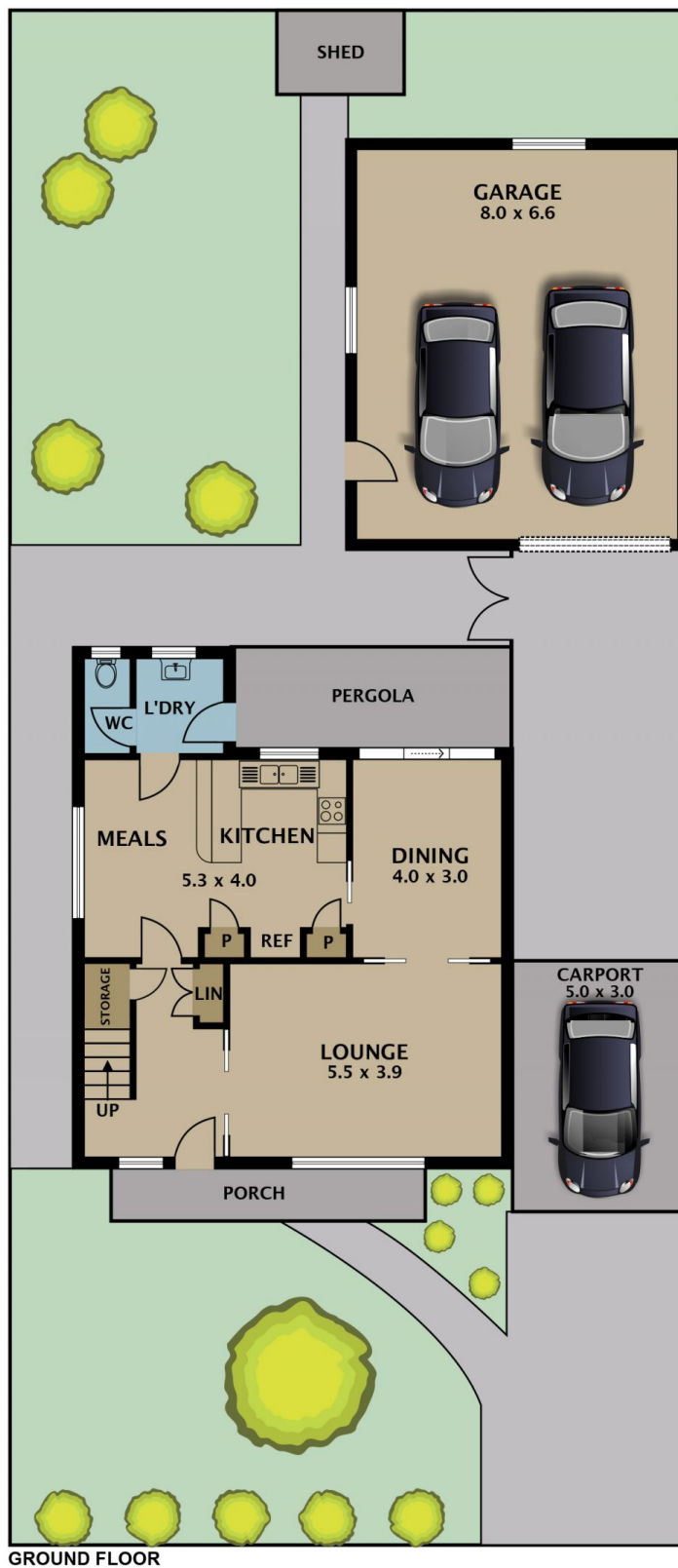
Family-sized and family-friendly, the home is complete with four bedrooms, two bathrooms, three toilets, formal lounge, formal dining, large kitchen with adjacent meals area, north facing balcony on upper level, private pergola and paved alfresco entertaining at rear, separate laundry, and drive through carport to oversized lock up garage with workshop/storage space on a 523m2 block.

**View :** <https://www.jasonrealestate.com.au/sale/vic/north/tullamarine/residential/house/7330109>



**Jason Sassine**  
03 9338 6411

In mostly original condition with some modernisation, the



Disclaimer. Please note plans are indicative only and not drawn to exact scale. All dimensions are approximate. Potential buyers view the property in person.

# 24 Scampton Crescent Tullamarine