



INSPECTION BY PRIVATE APPOINTMENT ONLY
Before entering a property please make sure you have read and understood the following safety precautions.

- Please do not enter the property if you have:
 - Any symptoms of a Cold or Flu
 - Recently travelled overseas
 - Tested positive to the Coronavirus
 - Been in contact with someone who has tested positive to the Coronavirus
- Where Possible there will be hand sanitiser available for use, please apply and while in the property avoid touching surfaces.
- Keep Social Distancing minimum 1.5 metres

Safety precautions at your home

- Wash hands with soap and water for 20 seconds
- Cough into your elbow or sleeve
- Don't touch face with unwashed hands

JASON real estate



15 Lucy Crescent GREENVALE VIC

4 2 2

This immaculate lowset family home on a fenced 407m2 block in popular 'Greenvale Garden Estate', offers effortless, easy-care living in comfort and style; presentation is sparkling throughout and there is no money needing to be spent, just unpack and relax...

A well-designed floor plan facilitates great family-friendly living across one level, comprising four bedrooms, two bathrooms, study/homework area, two separate living rooms, galley kitchen, north-east facing covered patio, separate laundry with external access, and double lock up garage plus off-street parking for an additional vehicle.

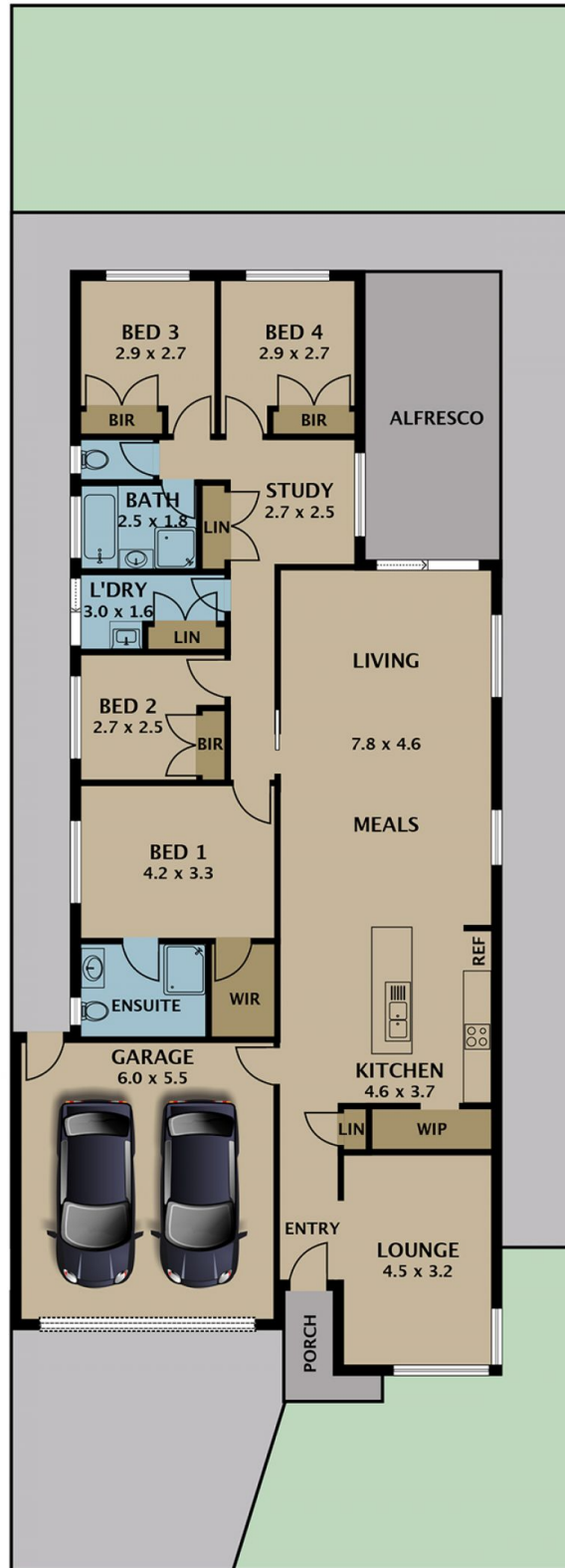
A soft neutral colour palette, split system air-conditioning in living, ceiling fans, stone benches in kitchen, stainless steel

Type : House
Land Size : 407 sqm
View : <https://www.jasonrealestate.com.au/sale/vic/north/greenvale/residential/house/7330119>



Joseph Sassine
03 9304 1444

[For full version visit the website](https://www.jasonrealestate.com.au)



Disclaimer. Please note plans are indicative only and not drawn to exact scale. All dimensions are approximate. Potential buyers view the property in person.

15 Lucy Crescent Greenvale