



**INSPECTION BY PRIVATE APPOINTMENT ONLY**  
Before entering a property please make sure you have read and understood the following safety precautions.

- Please do not enter the property if you have:**
  - Any symptoms of a Cold or Flu
  - Recently travelled overseas
  - Tested positive to the Coronavirus
  - Been in contact with someone who has tested positive to the Coronavirus
- Refrain from handshaking or personal contact
- Where Possible there will be hand sanitizer available for use, please apply and wipe on the property avoid touching surfaces.
- Keep Social Distancing minimum 1.5 metres

**Safety precautions at your home**

- Wash hands with soap and water for 20 seconds
- Cough into your elbow or sleeve
- Don't touch your face with unwashed hands



**86 Clare Boulevard GREENVALE VIC**

4 3 2

Architectural in design and big on style, this stunning family home in desirable Shannon Rise estate is modern, sophisticated and with striking street appeal, it showcases the very finest in contemporary living, without compromise.

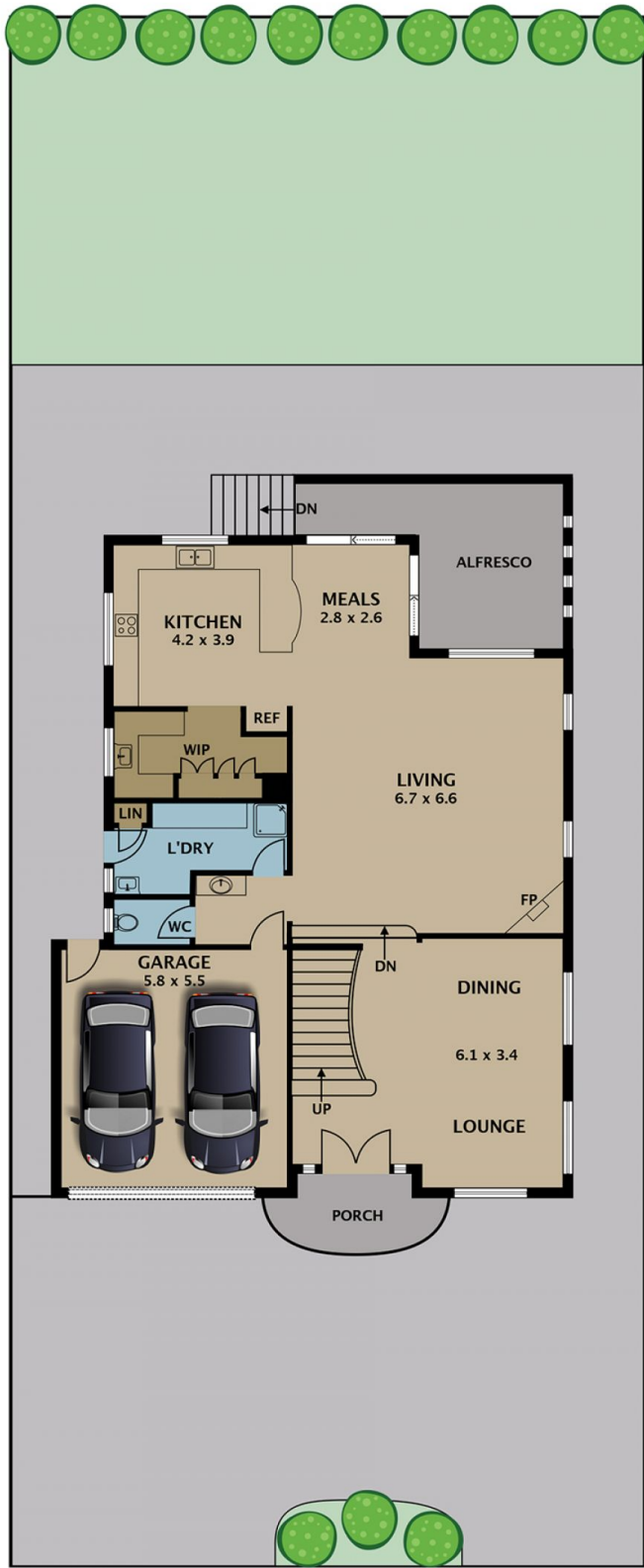
**Type** : House  
**View** : <https://www.jasonrealestate.com.au/sale/vic/north/greenvale/residential/house/7330136>

Over two substantial levels, the home includes three bedrooms plus expansive rumpus area or fourth bedroom, two luxury bathrooms, plus a downstairs wet room and third toilet, two separate living zones; a formal lounge/dining and a huge open plan living and meals area with adjacent kitchen, north facing alfresco area, double lock up garage with Bluetooth control, plus side access to bring in boat/trailer and off-street parking with a circular driveway for extra vehicles, on a fully fenced 626m2 block.

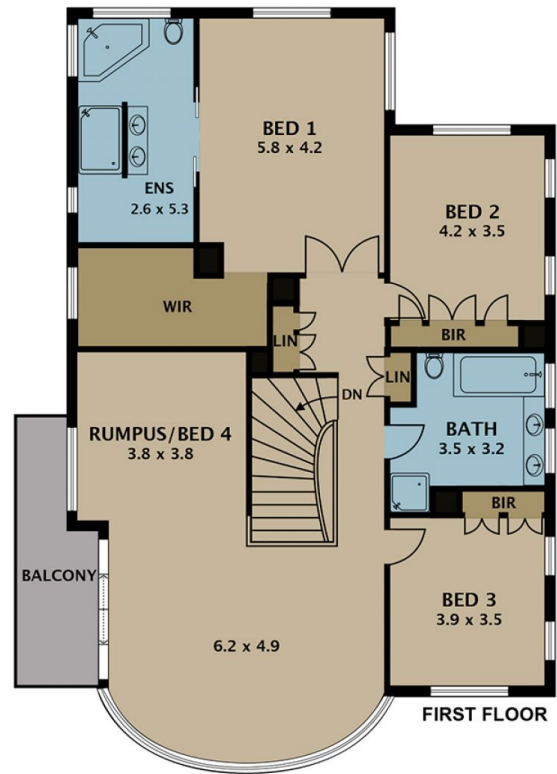


**Jason Sassine**  
**03 9338 6411**

[For full version visit the website](https://www.jasonrealestate.com.au)



**GROUND FLOOR**



**FIRST FLOOR**

Disclaimer. Please note plans are indicative only and not drawn to exact scale. All dimensions are approximate. Potential buyers view the property in person.

# 86 Clare Blvd Greenvale