



17 Phelan Court TULLAMARINE VIC

3 2 3

Positioned on a great sized allotment measuring 694sqm in the heart of Tullamarine, this one owner brick veneer home has plenty of potential for either a first home buyer or investor. Offering a brilliant floor plan over a single level.

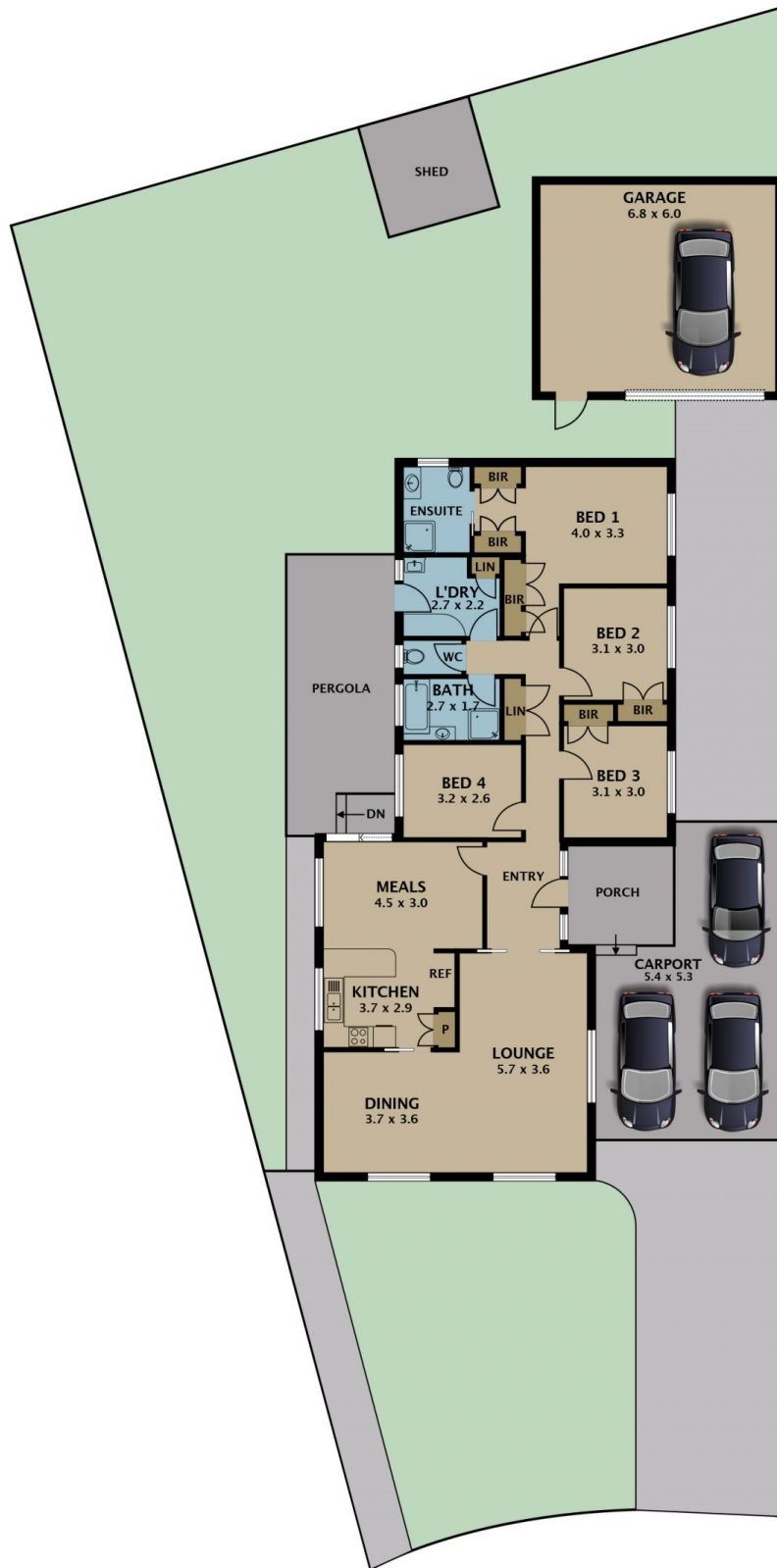
Type : House

View : <https://www.jasonrealestate.com.au/sale/vic/north/tullamarine/residential/house/7330154>

This home consists of four generous sized bedrooms, a central bathroom with separate toilet, an ensuite to the master bedroom, practical laundry, drive through access from a 3-car carport leading you to a double garage offering a total of 5 car accommodation, a L-shaped lounge dining area, a well presented kitchen with generous meals area.

This great family home also offers gas ducted heating, evaporative cooling and ceiling fans, making this home

[For full version visit the website](#)



Disclaimer. Please note plans are indicative only and not drawn to exact scale. All dimensions are approximate. Potential buyers view the property in person.

17 Phelan Court Tullamarine