



10 Straw Flower Circuit GREENVALE VIC

4 2 2

This well-positioned home in the leafy suburb of Greenvale is perfect for the first home buyer, young family, or astute investor. Close to local amenities, parkland, transport, and an easy commute to the CBD, this almost new home is move-in ready and requires no work on your part.

Set on a 336m2 block, the compact floorplan consists of four bedrooms - the master with walk-in robe and ensuite, modern bathroom with separate toilet, open plan kitchen, living and dining space, separate functional laundry, double lock-up garage, an undercover alfresco area, and covered front porch.

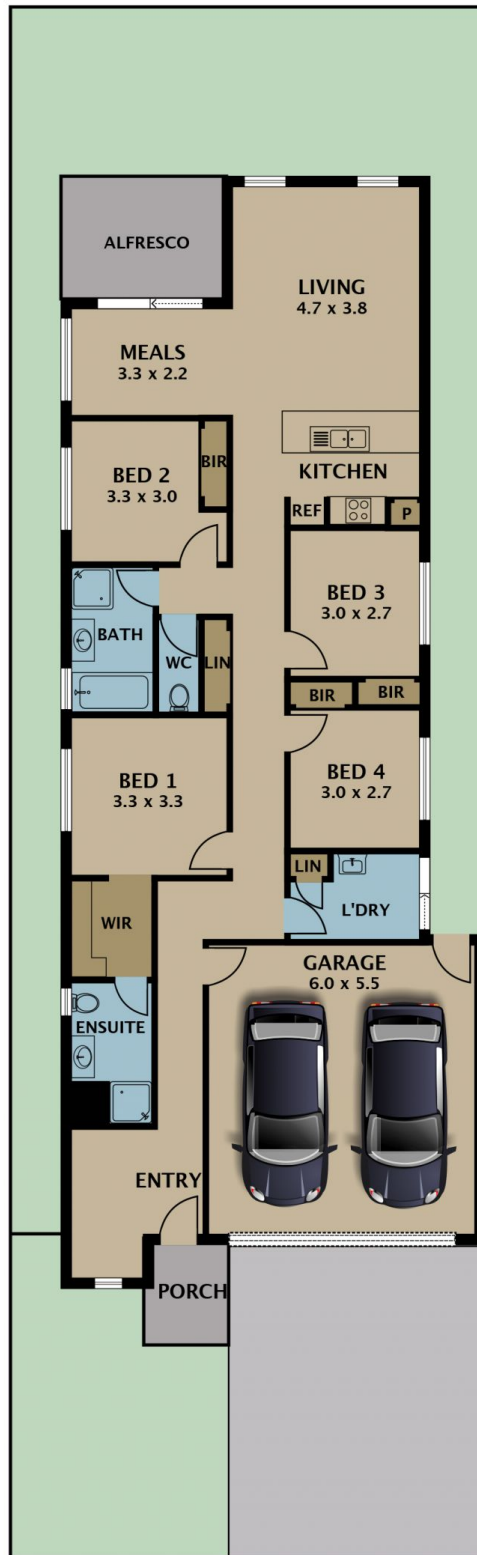
Presentation is immaculate throughout with a clean and contemporary colour palette, tiled floors in living areas, and

Type : House
Land Size : 336 sqm
View : <https://www.jasonrealestate.com.au/sale/vic/north/greenvale/residential/house/7330163>



Jason Sassine
 03 9338 6411

[For full version visit the website](https://www.jasonrealestate.com.au)



Disclaimer. Please note plans are indicative only and not drawn to exact scale. All dimensions are approximate. Potential buyers view the property in person.

10 Straw Flower Circuit Greenvale