



10 Stella Street GLENROY VIC

4 2 2

This well-cared for post-war weatherboard home, circa 1950, on a generous sized 689m² block with 16-metre-wide frontage is filled with the charm and character of its era, whilst effortlessly facilitating the needs of the modern family; there is also development potential of site to build 3-4 dwellings (STCA).

Offering single level living, the home comprises enclosed front porch, four bedrooms, two modern bathrooms, large central kitchen, formal living and dining, office/second living area, expansive north facing covered timber deck, separate laundry, tandem carport, and 6.9mx4.7m shed.

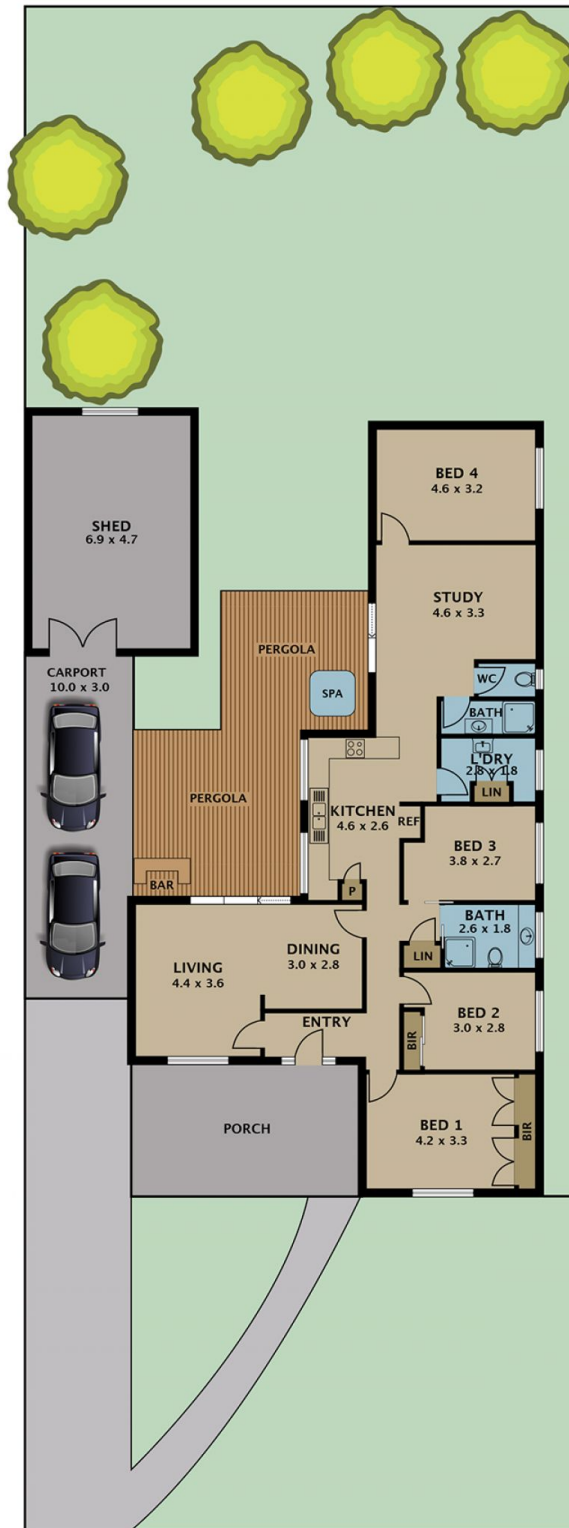
High ceilings with ornate cornices, double hung windows, timber flooring, ducted gas heating, split system

[For full version visit the website](#)

Type : House
Land Size : 687 sqm
View : <https://www.jasonrealestate.com.au/sale/vic/north/glenroy/residential/house/7330182>



Jason Sassine
03 9338 6411



Disclaimer. Please note plans are indicative only and not drawn to exact scale. All dimensions are approximate. Potential buyers view the property in person.

10 Stella Street Glenroy