



## 59 Helmsdale Crescent GREENVALE VIC

4 3 3

This beautifully presented modern family home offers an abundance of living space spread over two levels. Situated on a generous 802sq.m block, there's plenty of room for all the family and a secure spot to park the boat.

From the entry, the floorplan flows into the formal lounge, with high ceilings and a crisp white palette giving it an airy feel. Continue through to the heart of the home, the spacious open plan living, dining and kitchen area, with an adjoining theatre room that can be sectioned off with bi-fold doors. The fully equipped modern kitchen boasts a gourmet five-burner gas cooktop, double drawer dishwasher and plenty of storage.

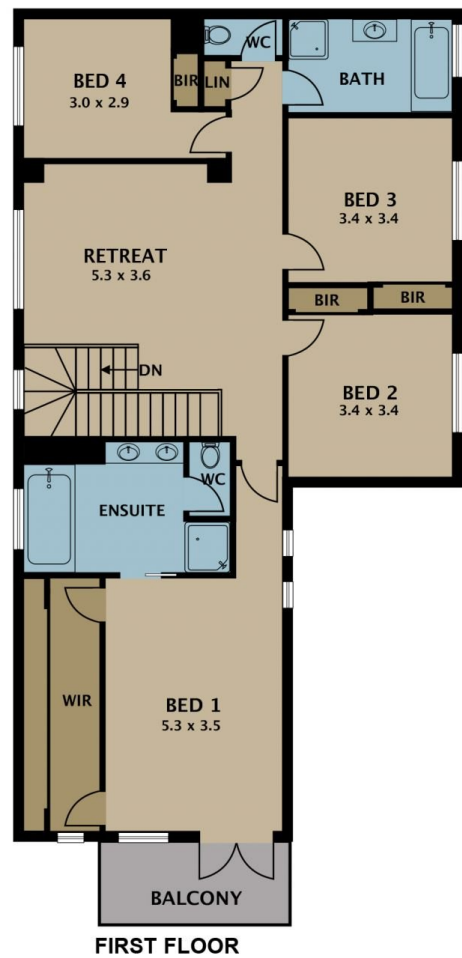
Upstairs you will find a fourth living area or kids retreat, four

**Type** : House  
**Land Size** : 802 sqm  
**View** : <https://www.jasonrealestate.com.au/sale/vic/north/greenvale/residential/house/7330258>



**Jason Sassine**  
**03 9338 6411**

[For full version visit the website](https://www.jasonrealestate.com.au)



Disclaimer. Please note plans are indicative only and not drawn to exact scale. All dimensions are approximate. Potential buyers view the property in person.

# 59 Helmsdale Crescent Greenvale