



21 Honey Flower Way GREENVALE VIC

4 2 2

Nestled in the Greenvale Gardens Estate is this exceptional spacious contemporary family home set on a generous 448 sq.m allotment is superbly located within minutes away of Greenvale Shopping Centre, respected schools, and Parklands.

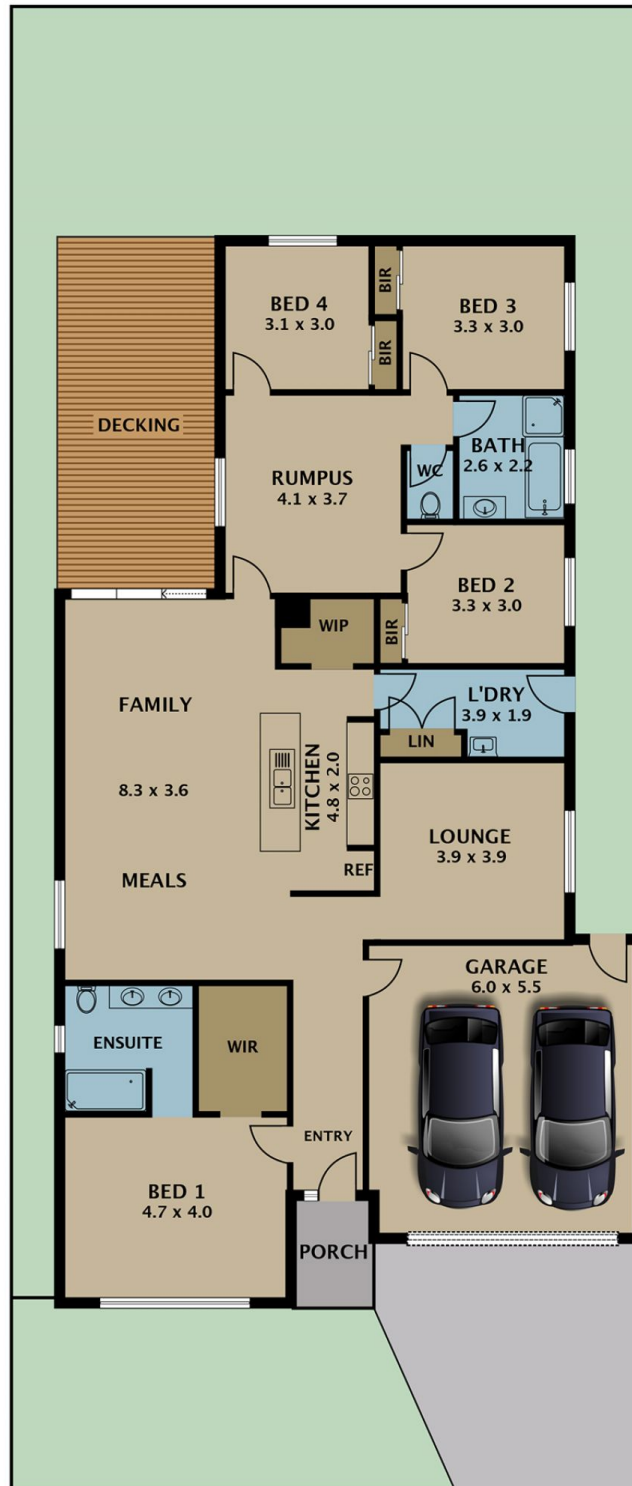
Showcasing a practical and beautiful floor plan spread over a single level, that features three separate living rooms, including a lounge room, rumpus room and an informal family room. A large master bedroom with a fitted WIR and deluxe ensuite, as well as three extra bedrooms with BIR, second bathroom to service the remaining bedrooms and the added advantage of a large double garage (remote-control) internal entry access to complete the magnificent floor plan.

Type : House
Land Size : 448 sqm
View : <https://www.jasonrealestate.com.au/sale/vic/north/greenvale/residential/house/7330275>



Joseph Sassine
03 9304 1444

[For full version visit the website](https://www.jasonrealestate.com.au)



Disclaimer. Please note plans are indicative only and not drawn to exact scale. All dimensions are approximate. Potential buyers view the property in person.

21 Honey Flower Way Greenvale