



## 15 Kinloch Grove GREENVALE VIC

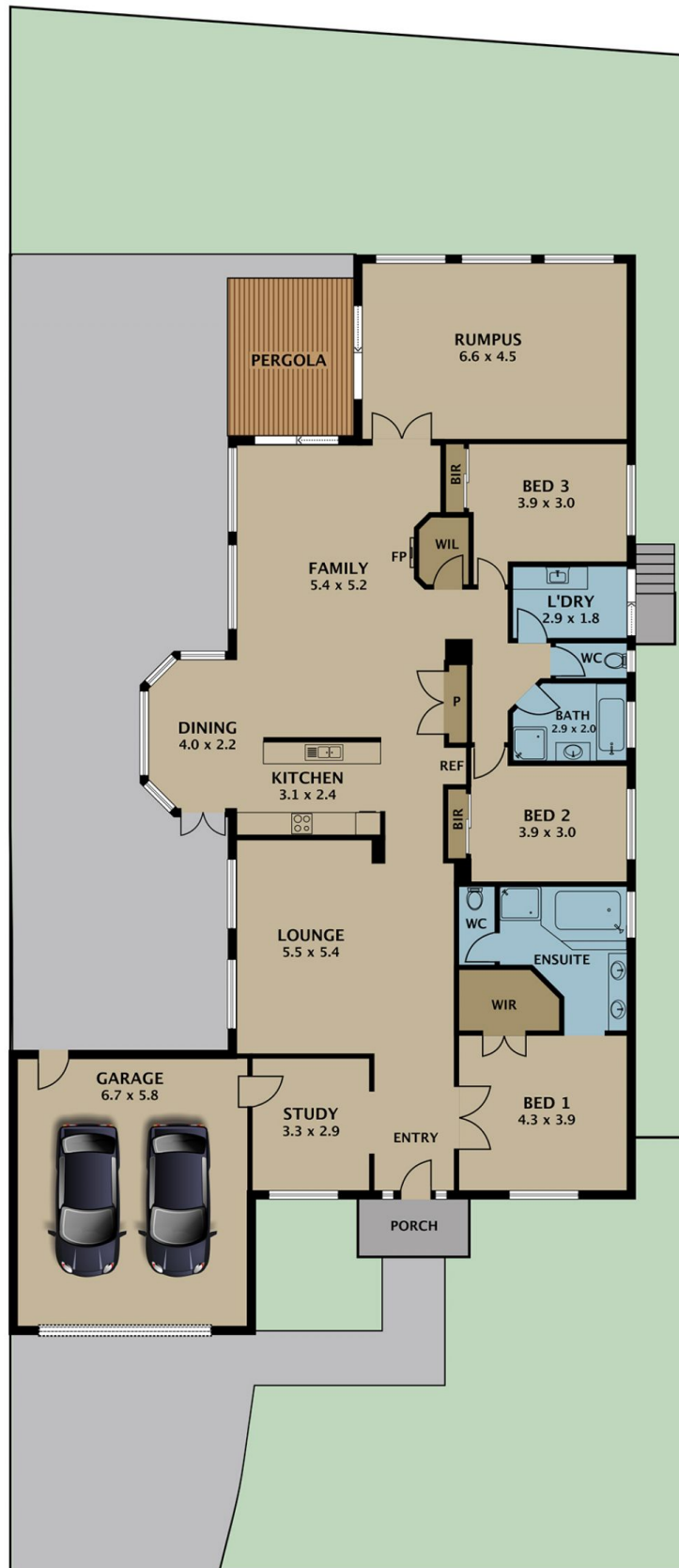
3 2 2

An exceptional opportunity exists to secure a family home of distinction in a prime Shannon Rise location. Set on a generous 665m2 block and presenting beautifully from the street, this home boasts a lavish and luxurious design, an abundance of living space, and captivating views of the city.

A contemporary Tuscan-inspired interior presents a welcoming sanctuary with high vaulted ceilings, natural rustic floor tiles, feature columns, warm earthy tones, and large windows that flood the home with natural light. Upon entry, you are greeted by the formal lounge that flows onto the spacious open plan living area boasting oversized bay windows and an electric fireplace. The beautifully appointed kitchen offers generous food preparation spaces,

**Type** : House  
**Land Size** : 665 sqm  
**View** : <https://www.jasonrealestate.com.au/sale/vic/north/greenvale/residential/house/7330290>

[For full version visit the website](https://www.jasonrealestate.com.au)



Disclaimer. Please note plans are indicative only and not drawn to exact scale. All dimensions are approximate. Potential buyers view the property in person.

# 15 Kinloch Grove Greenvale