



## 9 Kircaldy Court GREENVALE VIC

4 3 2

Situated on a generous 681m<sup>2</sup> block in one of Greenvale's most sought after pockets and with two levels of superbly appointed living space, this family residence is a dream to come home to.

Double doors open onto an atrium-style entry awash with natural light from the wall-to-wall picture windows and glass roof. Off the entrance is a theatre room/fifth bedroom, serviced by a nearby guest bathroom, while the hall leads to the substantial open plan living, dining, kitchen and rumpus/family area with adjoining lounge.

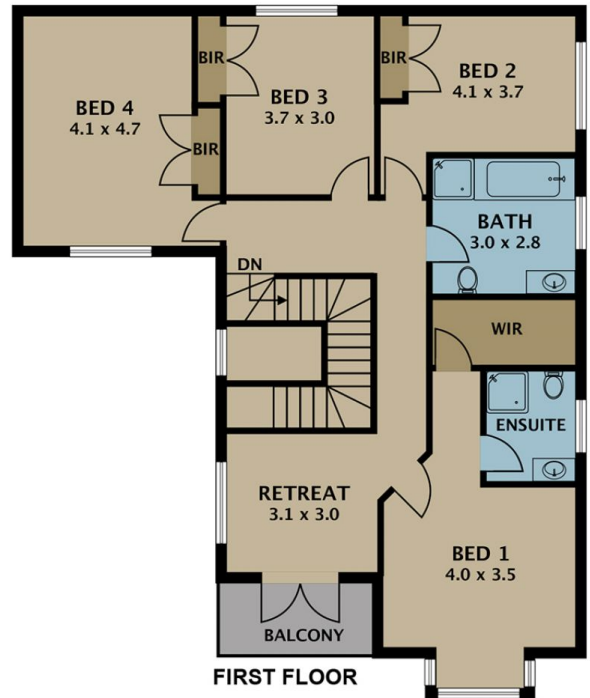
Follow the central staircase to the second level, where you will find four generous bedrooms with built-ins, a family bathroom and a sitting area with French doors that open

[For full version visit the website](#)

**Type** : House  
**Land Size** : 681 sqm  
**View** : <https://www.jasonrealestate.com.au/sale/vic/north/greenvale/residential/house/7330326>



**GROUND FLOOR**



**FIRST FLOOR**

Disclaimer. Please note plans are indicative only and not drawn to exact scale. All dimensions are approximate. Potential buyers view the property in person.

# 9 Kircaldy Court Greenvale