



## 15 Taormina Street GREENVALE VIC

5 3 2

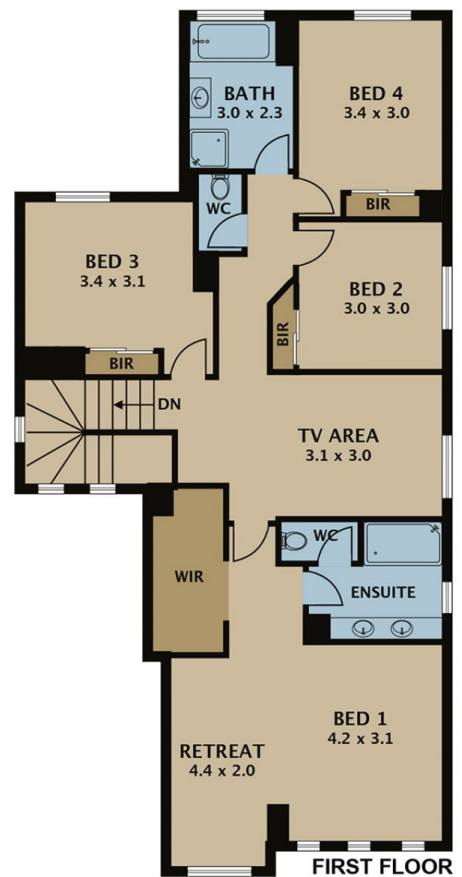
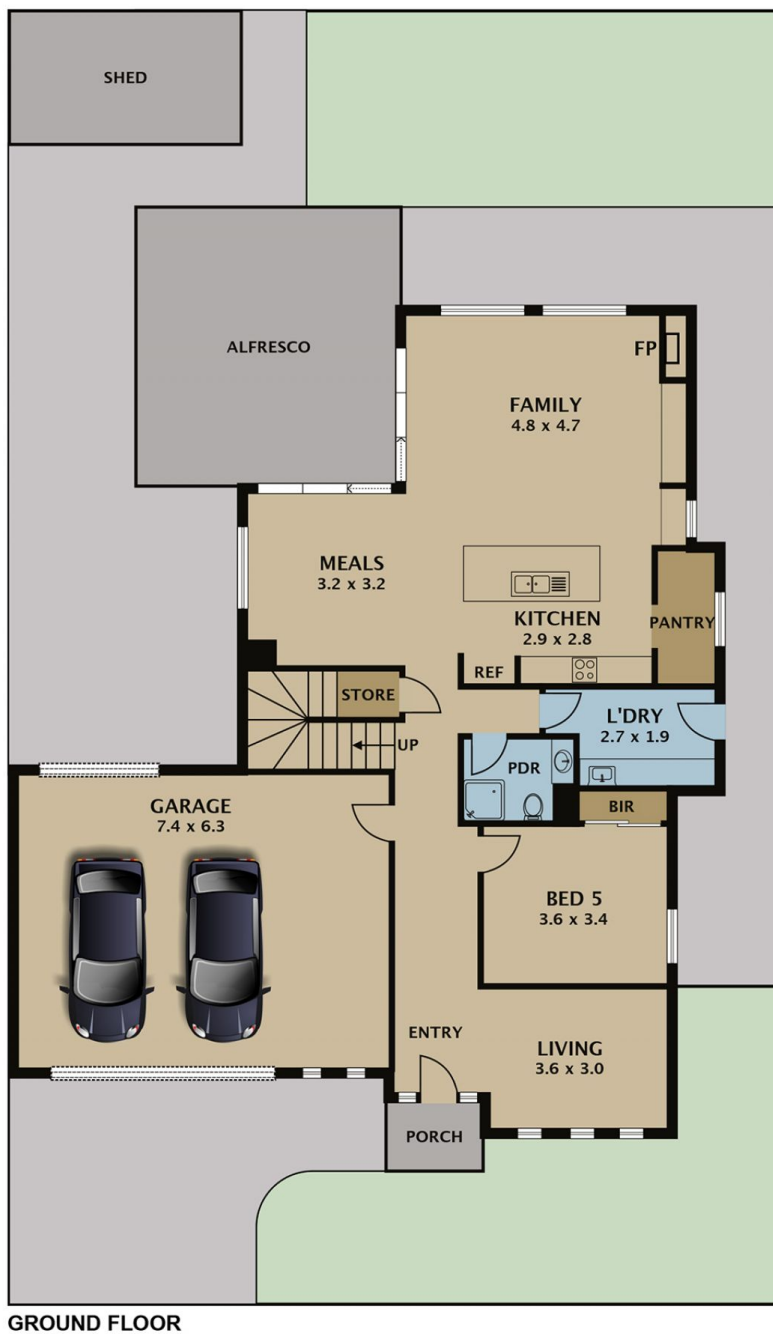
Imposing in size and elegant in design, this modern family home, situated in the beautiful, established Providence Estate in Greenvale, is sure to impress.

With two levels of living space, there's plenty of room for the family to spread out. The lower level comprises a spacious open plan living, dining, and kitchen area, a separate formal lounge, and a guest bedroom/study. Upstairs are four bedrooms with built-in robes, a family bathroom with a separate toilet and an upstairs living area/media space. Parents will love the massive master retreat that boasts a sitting area, walk-in robe and ensuite.

Elegant white tiles flow through the living space with a gas fireplace giving you a cozy corner to relax. Plantation

**Type** : House  
**Land Size** : 448 sqm  
**View** : <https://www.jasonrealestate.com.au/sale/vic/north/greenvale/residential/house/7330332>

[For full version visit the website](https://www.jasonrealestate.com.au)



Disclaimer. Please note plans are indicative only and not drawn to exact scale. All dimensions are approximate. Potential buyers view the property in person.

# 15 Taormina Street Greenvale