



## 19 Linlithgow Way GREENVALE VIC

5 4 3

A grand statement of elegance and class, this stunning family entertainer with high ceilings, prominently positioned on an elevated 972m2 block, boasts of almost 180 degrees of uninterrupted views over the picturesque Greenvale's Shannon Rise perfect for a large or growing family.

This modern home offers an abundance of living space for everyone in the family to relax and entertain. It comprises an open plan kitchen, meals and family area, a formal lounge, rumpus room/home theatre that's wired for sound system, a large home office with a door for privacy, a separate upstairs living area with a balcony, and an additional living space upstairs- perfect for a kids' study or play area.

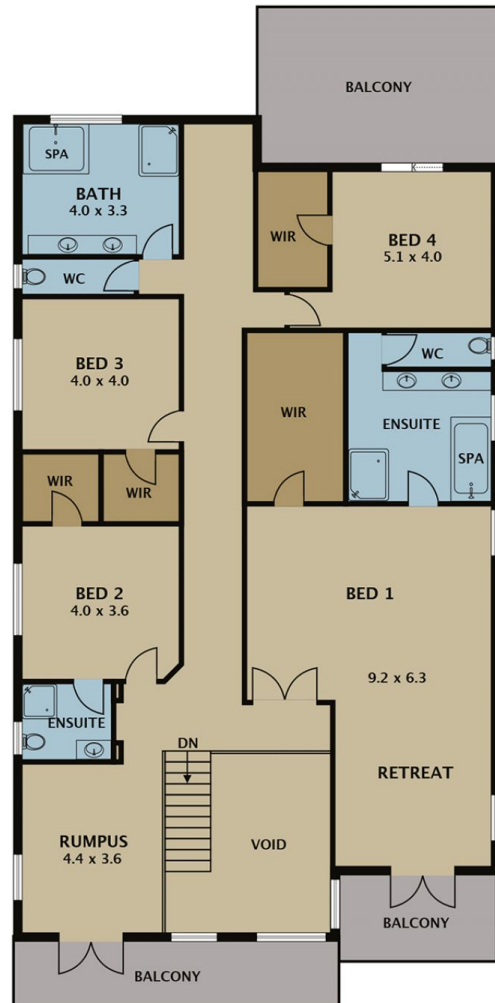
The generous accommodations comprise five bedrooms,

[For full version visit the website](https://www.jasonrealestate.com.au/sale/vic/north/greenvale/residential/house/7330339)

**Type** : House  
**Building Size** : 9 sqm  
**Land Size** : 972 sqm  
**View** : <https://www.jasonrealestate.com.au/sale/vic/north/greenvale/residential/house/7330339>



**Naaz Fatima**  
03 9338 6411



Disclaimer. Please note plans are indicative only and not drawn to exact scale. All dimensions are approximate. Potential buyers view the property in person.

# 19 Linlithgow Way Greenvale