

820 Sydney Road BRUNSWICK VIC

Jason Commercial are delighted to present For Sale this prominent 2 storey shop and dwelling situated in the popular and busy Sydney Road, ready for occupation, investment or re-development (S.T.C.A.)

* Versatile two-level building, comprising ground floor retail and first floor 3 bedroom plus study residence

* Rear laneway access

* Total building area 230 sqm approx.

* Land area of 314 sqm approx.

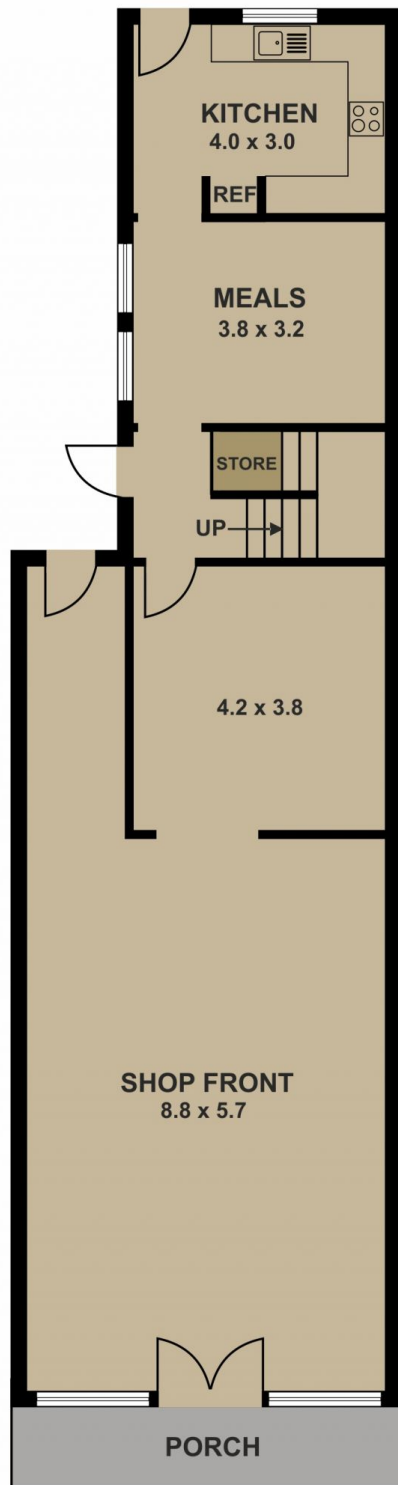
* Vacant possession - suitable for a variety of uses (S.T.C.A.)

* Commercial 1 zoning.

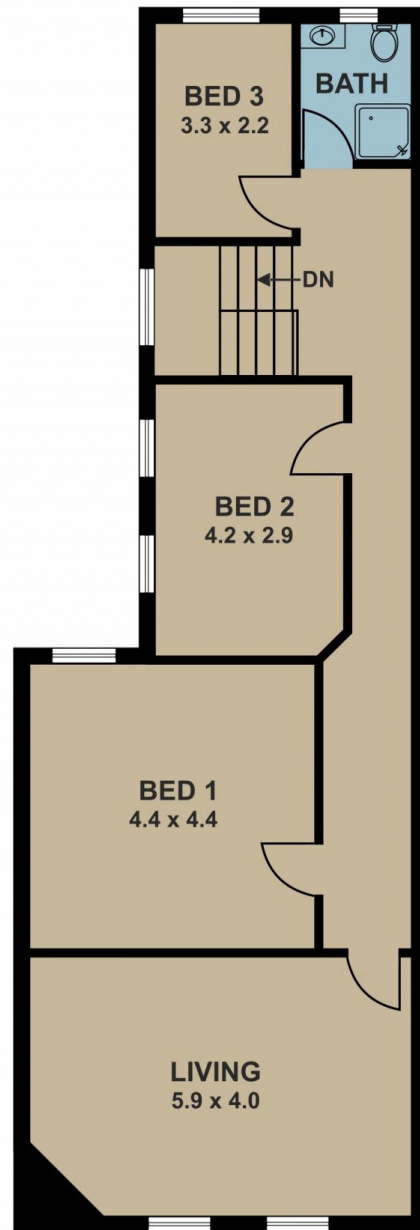
Type	: Retail
Building Size	: 230 sqm
Land Size	: 314 sqm
View	: https://www.jasonrealestate.com.au/sale/vic/north/brunswick/commercial/retail/7331048

[For full version visit the website](https://www.jasonrealestate.com.au)

<https://www.jasonrealestate.com.au>



GROUND FLOOR



FIRST FLOOR

Disclaimer. Please note plans are indicative only and not drawn to exact scale. All dimensions are approximate. Potential buyers view the property in person.

820 Sydney Road Brunswick