

## 7/72 Logistics Street KEILOR PARK VIC

2 🚗

Jason Commercial is proud to present this As New Warehouse packed with high-end quality extras including a Premium

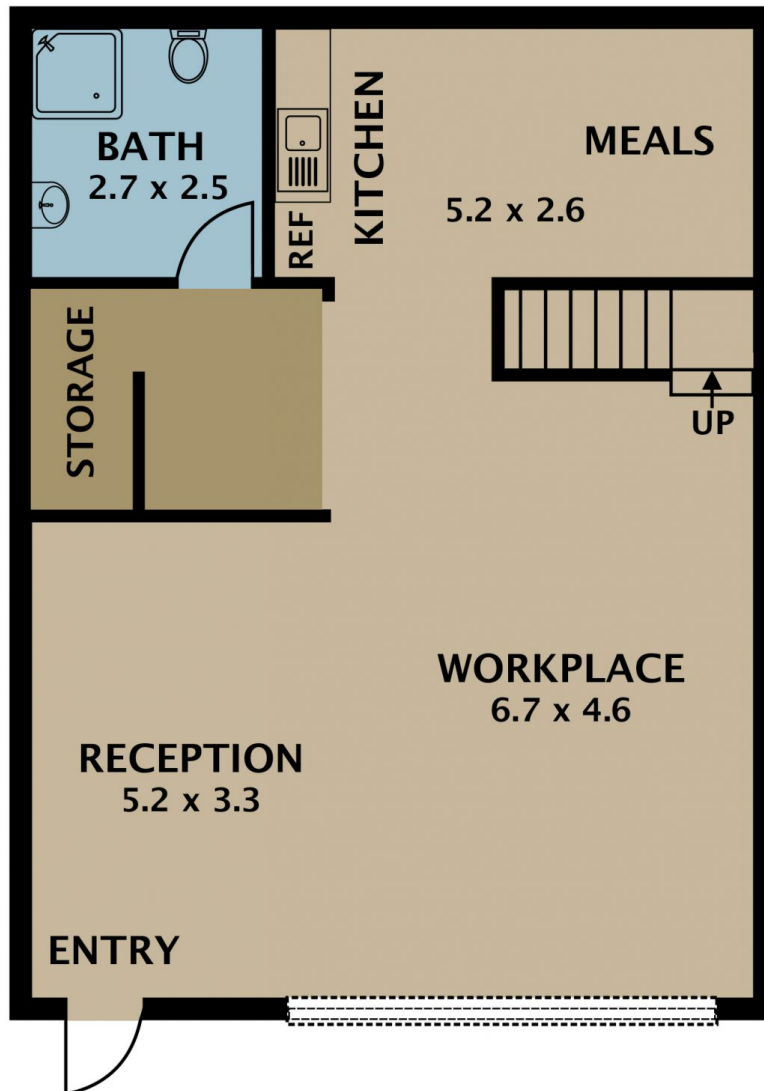
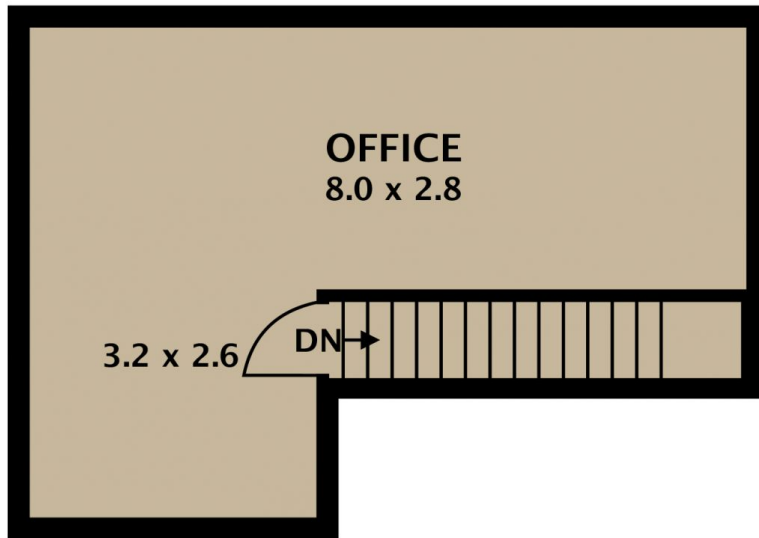
Office fit-out, ideal as a suite showroom or office warehouse and is conveniently located within easy access to major arterials and secluded behind a remote security front gate presenting an ideal opportunity for the owner occupier or investor.

**Type** : Offices  
**Building Size** : 132 sqm  
**View** : <https://www.jasonrealestate.com.au/sale/vic/north/keilor-park/commercial/offices/7331052>

Quality Features Include:

- \*Total Building Area: 132 sq.m\*
- \* 2 allocated (9titles) car space
- \*Remote Operated High Roller Door Container Access
- \*3 Phase Power

[For full version visit the website](https://www.jasonrealestate.com.au)



Disclaimer. Please note plans are indicative only and not drawn to exact scale. All dimensions are approximate. Potential buyers view the property in person.

7172 Logistics Crescent Keilor Park