



12 Smolic Court TULLAMARINE VIC

Striking ground & first-floor office space with adjoining warehouse storage.

Ideally located within close proximity to the Melbourne International Airport, Tullamarine Freeway & the Western Ring Road

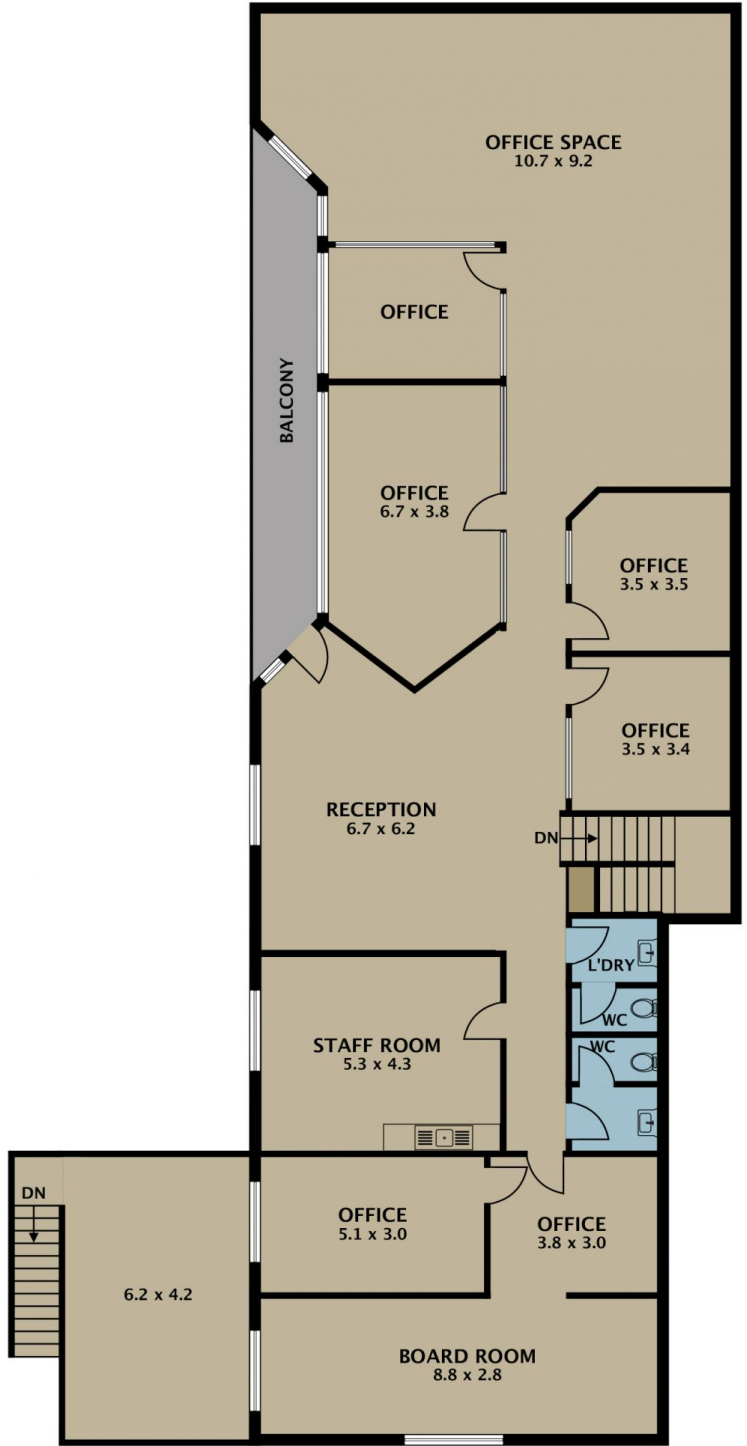
Features Include:-

Ground Floor Office / Warehouse Storage

- Large front office / showroom
- Two (2) partitioned offices
- Large conference room
- Fully carpeted office
- Male / Female toilets
- Tea / lunchroom
- Alarm system

[For full version visit the website](#)

Type	: Offices
Building Size	: 895 sqm
Land Size	: 954 sqm
View	: https://www.jasonrealestate.com.au/sale/vic/north/tullamarine/commercial/offices/7331054



Disclaimer. Please note plans are indicative only and not drawn to exact scale. All dimensions are approximate. Potential buyers view the property in person.

12 Smolic Court Tullamarine