

35a Yellowbox Drive CRAIGIEBURN VIC

Jason Real Estate Commercial are proud to offer 35a Yellowbox Drive, Craigieburn for sale.

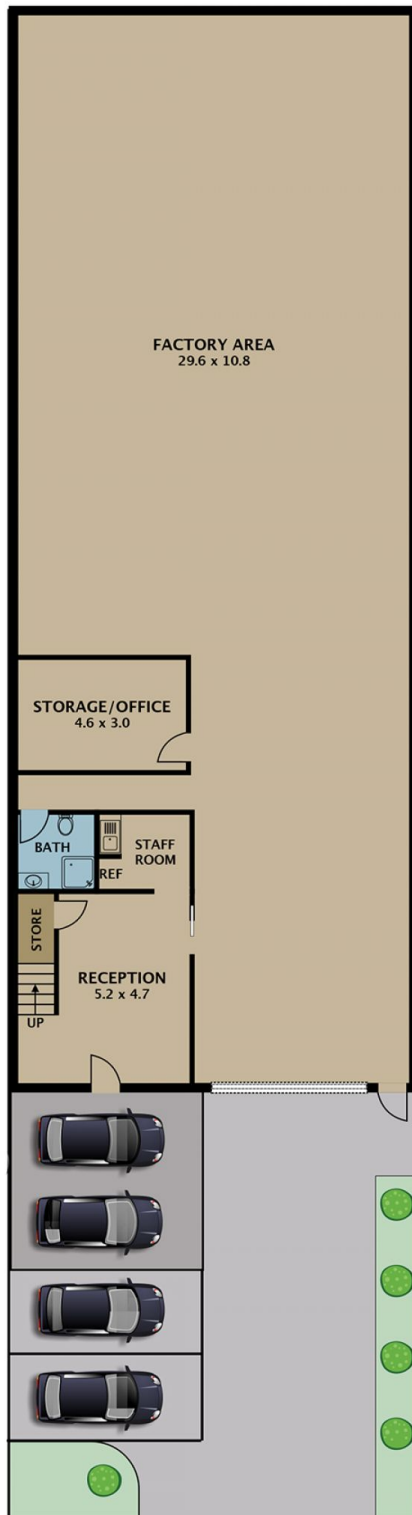
The property is well positioned just off the Hume Highway, providing easy access to the Hume Freeway and major road arterials.

The property features:

- Building Area: 400m² approx
- Land Area: 500m² approx
- Office / Reception area
- Parking: Onsite parking
- Electric Roller Door
- Secured Electric Gate

[For full version visit the website](https://www.jasonrealestate.com.au/sale/vic/north/craigieburn/commercial/offices/7331061)

| | |
|----------------------|---|
| Type | : Offices |
| Building Size | : 400 sqm |
| Land Size | : 500 sqm |
| View | : https://www.jasonrealestate.com.au/sale/vic/north/craigieburn/commercial/offices/7331061 |



Disclaimer. Please note plans are indicative only and not drawn to exact scale. All dimensions are approximate. Potential buyers view the property in person.

35a Yellow Box Drive Craigieburn