



## 7/41-43 Allied Drive Tullamarine VIC

2 🚗

Jason Real Estate Commercial are pleased to offer for lease to the public market: 7/41-43 Allied Drive, Tullamarine.

This warehouse, provides a great balance of office space with factory floor area and storage racking, perfect for any growing business looking to take the next step. With easy access to all major arterial roads such as Keilor Park Drive, Western Ring Road and close proximity to the Melbourne (MEL) and Essendon Fields Airport/s (MEB).

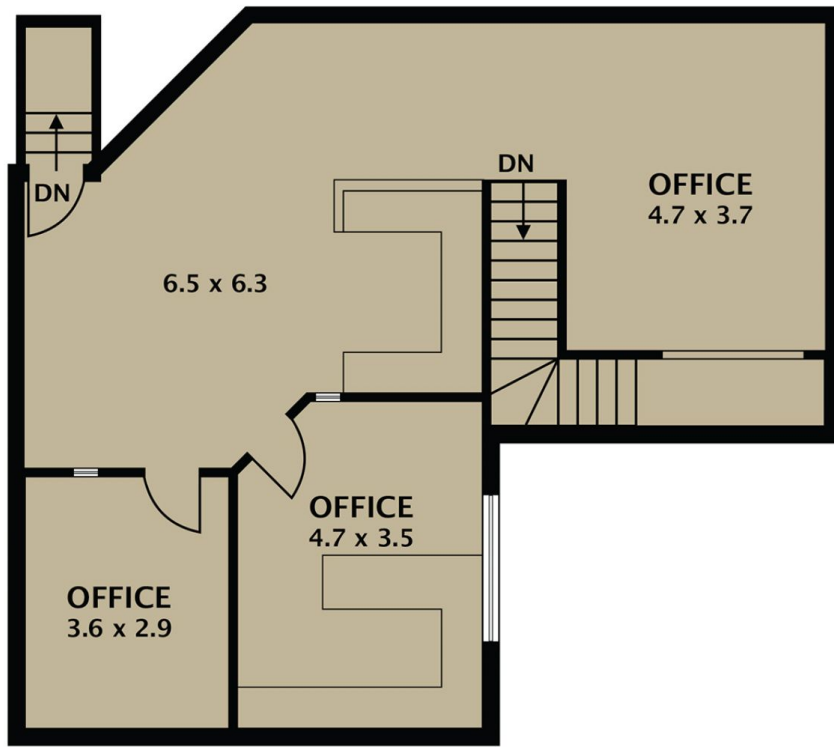
### KEY FEATURES INCLUDE:

- \* Building area: 220 m2 (approx)
- \* 2 reserved car parking spaces
- \* Industrial zone 1
- \* Office/amenities fit out includes reception desk, enclosed offices, lunch/tea room, kitchenette and restroom/shower

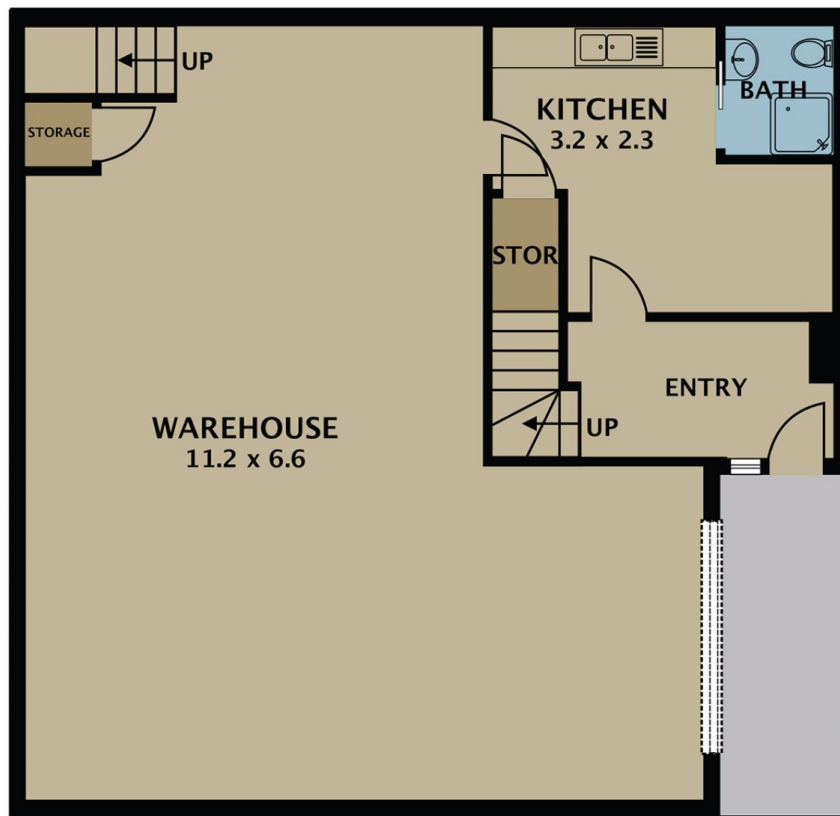
**Building Size** : 220 sqm  
**Land Size** : 172 sqm  
**View** : <https://www.jasonrealestate.com.au/lease/vic/north/tullamarine/commercial/industrial/7336907>



**Leo Kikyris**  
**03 9304 1444**



FIRST FLOOR



GROUND FLOOR

Disclaimer. Please note plans are indicative only and not drawn to exact scale. All dimensions are approximate. Potential buyers view the property in person.

7/41-43 Allied Drive Tullamarine