



46 Section Road Greenvale VIC

5 3 1

Effortlessly Luxurious, Infinitely Stylish, Outstandingly Spacious

Enjoy family living with this impeccable, brand-new home in Greenvale. Set on a corner allotment facing Woodlands Historic Park, this home features a stylish interior, quality finishes and an abundance of living space.

Effortlessly contemporary design elements to superior effect, this home ticks all the boxes when it comes to style and comfort. Quality light fittings throughout, keeps things fresh and modern. The bathrooms are a sanctuary to unwind in, with floor to ceiling tiling, quality fixtures and luxury baths. A cook's dream, the kitchen boasts a butler's pantry, gas cooktop, dishwasher, a substantial stone-top island and plenty of storage and food prep space.

Additional highlights include ducted heating and cooling, a security system, CCTV cameras and the list goes on.

Price : \$ 850,000

Land Size : 300 sqm

View : <https://www.jasonrealestate.com.au/sale/vic/north/greenvale/residential/house/7338734>

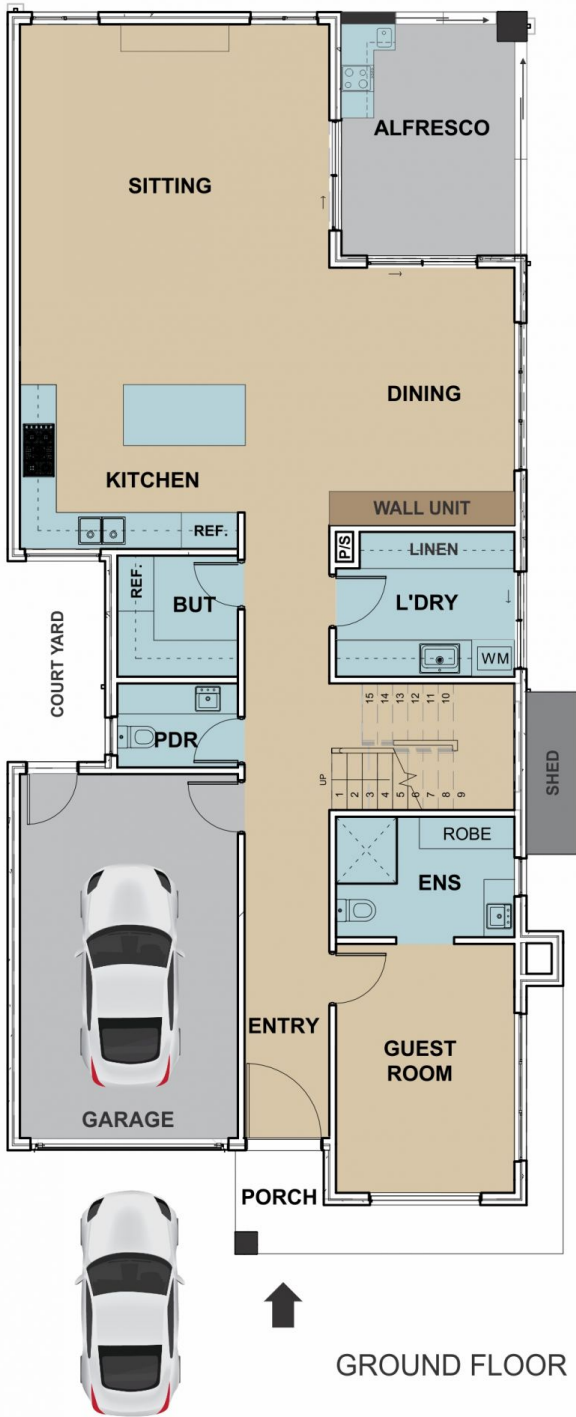


Jason Sassine
03 9338 6411

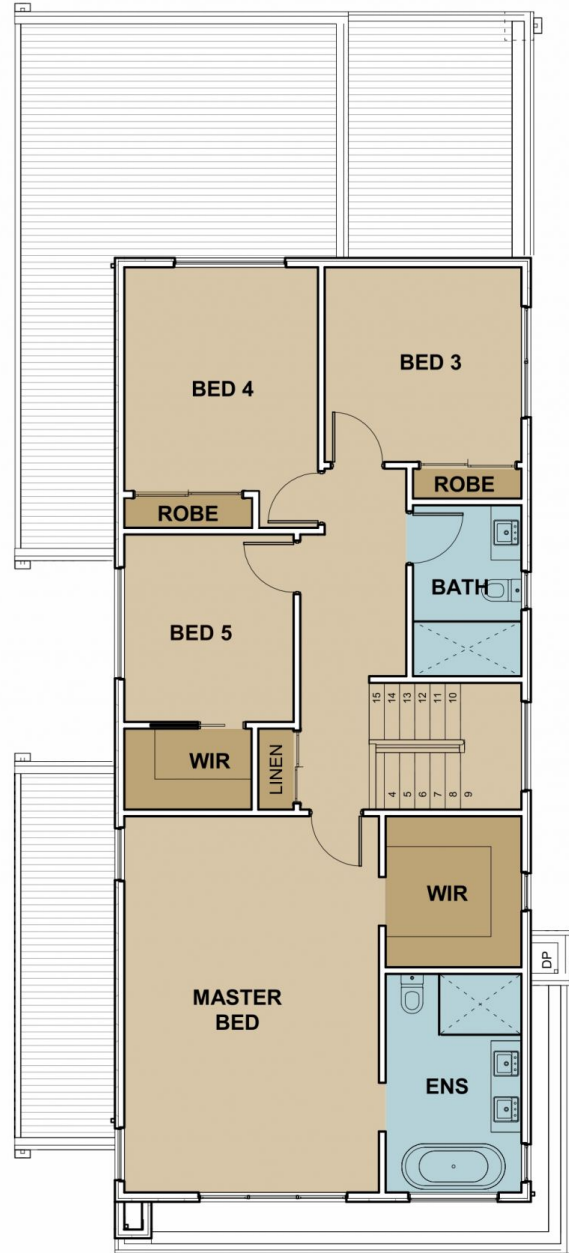


Romeo Sassine
03 9338 6411

BACK YARD



GROUND FLOOR



FIRST FLOOR

Disclaimer: Please note floor plans are indicative only not drawn to exact scale. All dimensions are approximate. Potential buyers should view the property in person.

46 Section Road, Greenvale