

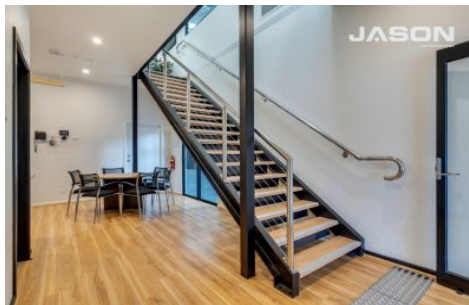


JASON
commercial

Leo Kikyris
0408 365 860

Commercial/Industrial
Division Manager

List your investment property with me today



1/18-20 Steele Court Tullamarine VIC

6 🚗

Jason Commercial is pleased to offer for sale to the public market via auction: 1/18-20 Steele Ct, Tullamarine.

This is your chance to secure this great facility with a premium fit-out and huge/long driveway.

This property is located with easy access to all nearby major arterial roads such as Keilor Park Drive, Calder Freeway, Western Ring Road, City Link Toll Roads and is also within close-proximity to the Melbourne (MEL) and Essendon Fields Airport/s (MEB).

KEY FEATURES INCLUDE:

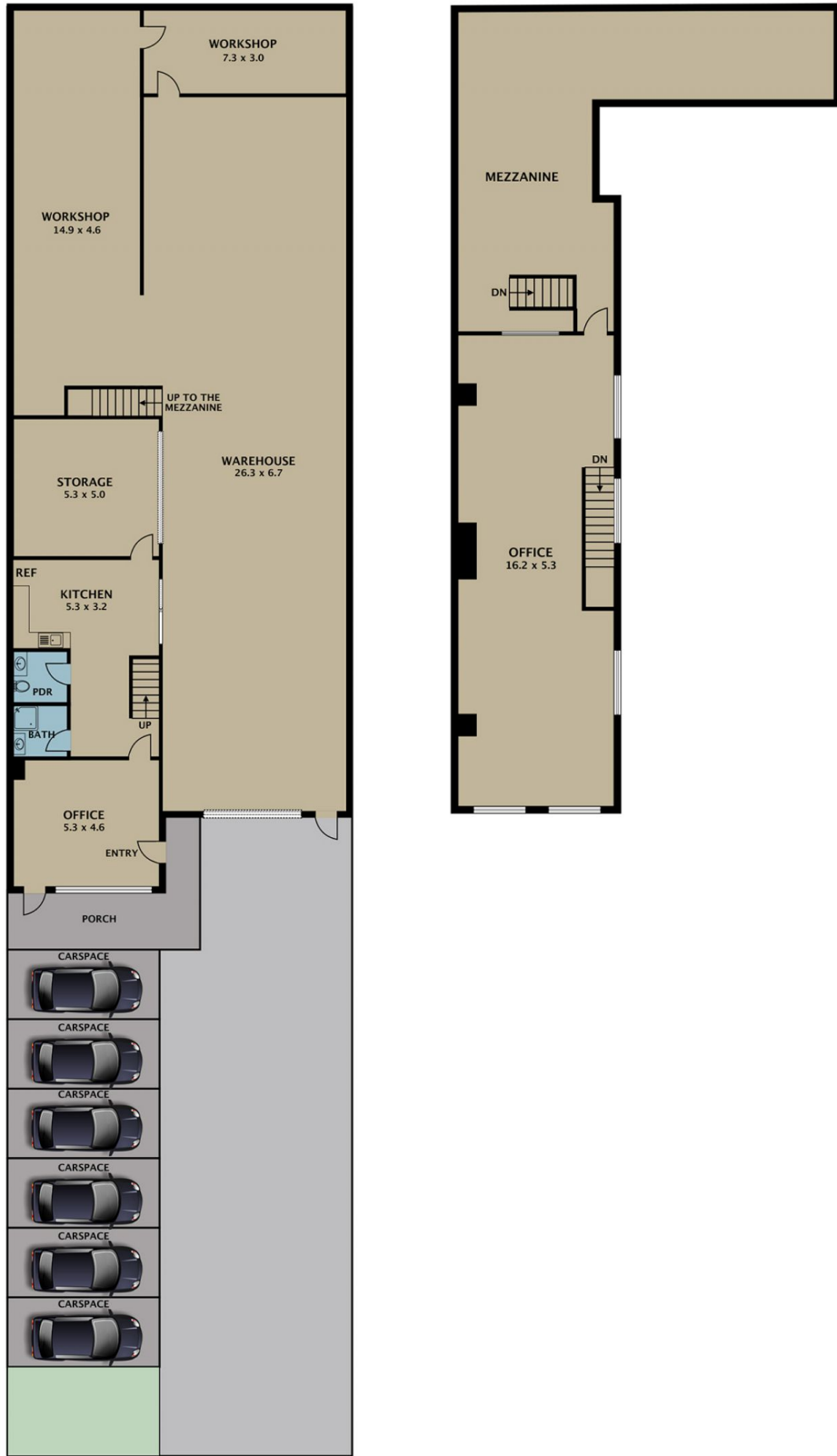
- * Land area: 1,095 M2 (Approx)
- * Building area: 573 M2 (Approx)

[For full version visit the website](https://www.jasonrealestate.com.au)

Type : Industrial
Building Size : 575 sqm
Land Size : 1095 sqm
View : <https://www.jasonrealestate.com.au/sale/vic/north/tullamarine/commercial/industrial/7605557>



Leo Kikyris
03 9304 1444



Disclaimer. Please note plans are indicative only and not drawn to exact scale. All dimensions are approximate. Potential buyers view the property in person.

1/18-20 Steele Court Tullamarine