



10/39 Barrie Road Tullamarine VIC

3 🚗

Situated within well maintained compound comes this ready to go warehouse showroom which includes security bars, dexion racking, safety ladder, pallet jack, forklift, safety cage, 3-phase power (upto 63 amps) and office furniture.

Type : Industrial
Building Size : 380 sqm
Land Size : 250 sqm
View : <https://www.jasonrealestate.com.au/lease/vic/north/tullamarine/commercial/industrial/7678909>

- AVAILABLE 1st NOVEMBER 2023
- PRIVATE INSPECTION ONLY
- FOR AN IMMEDIATE INSPECTION CALL US TODAY!

KEY FEATURES INCLUDE:

- * Total land area: 250 m2 (approx)
- * Total building area: 380 m2 (approx) which includes ground floor of 236m2, level 1 office of 43m2, and level 1 mezzanine of 101m2

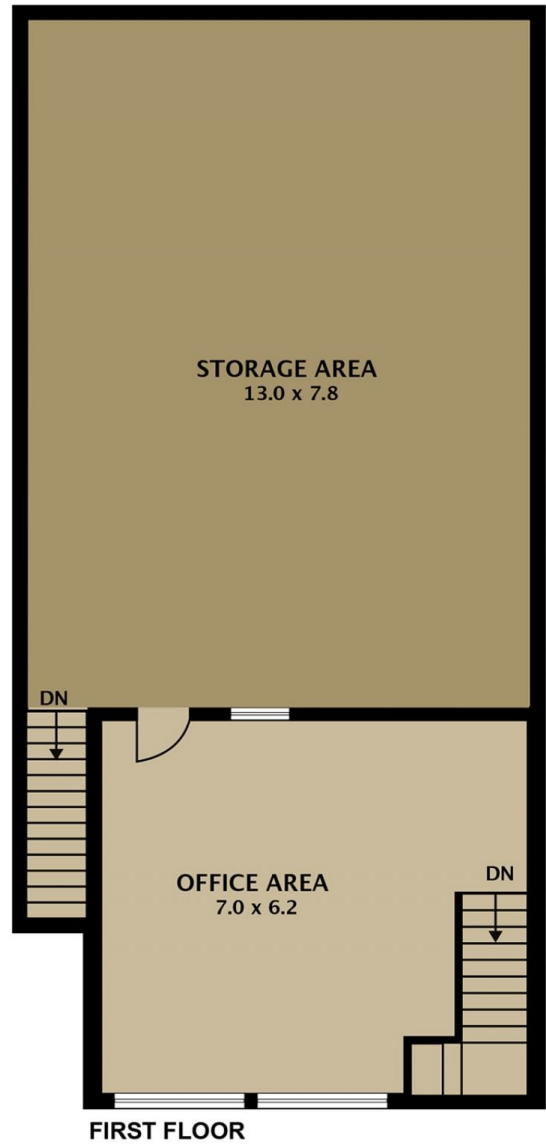
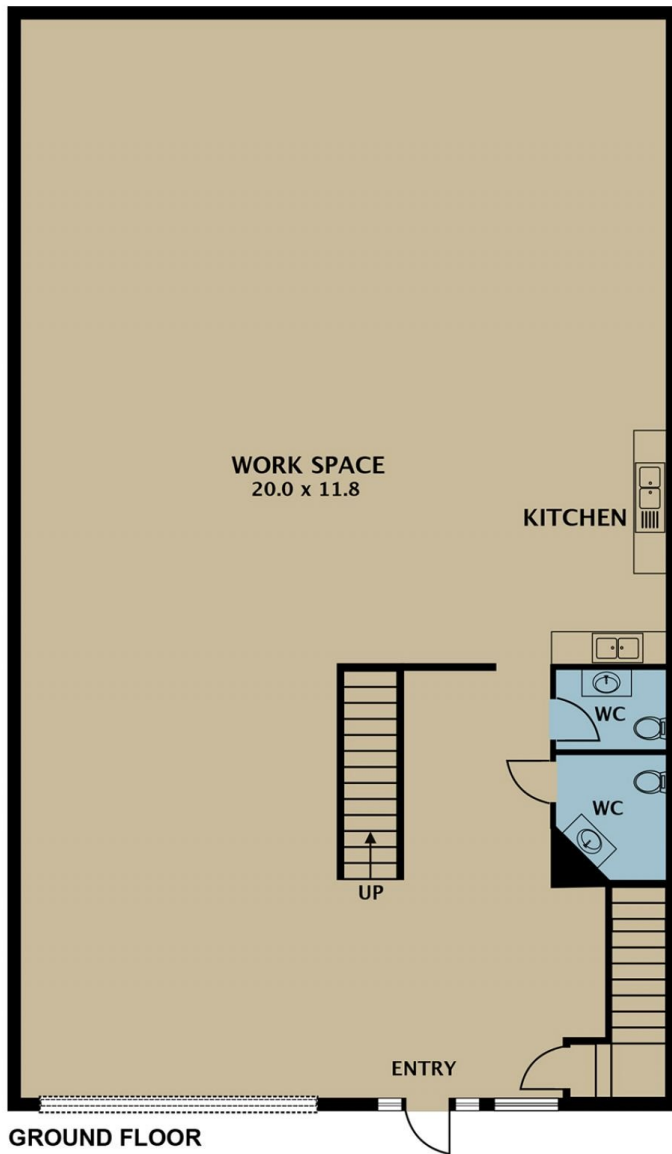
[For full version visit the website](https://www.jasonrealestate.com.au)



Leo Kikyris
03 9304 1444



Steve Kikyris
03 9304 1444



Disclaimer. Please note plans are indicative only and not drawn to exact scale. All dimensions are approximate. Potential buyers view the property in person.

10/39 Barrie Road Tullamarine