

28 Shawlands Drive Tullamarine VIC

3 2 2

Welcome to 28 Shawlands Drive, Tullamarine - a timeless gem nestled in a sought-after and quiet neighborhood. This charming residence, perfectly situated on a spacious 538 sqm2 approximate lot, invites you to discover its captivating features and welcoming ambiance.

Crafted with enduring brick veneer, this home exudes a sense of lasting quality. As you step inside, the warmth of timber floors welcomes you, guiding your gaze toward the grand, open, and extensive floor plan that lies ahead. The entryway gracefully leads you to the heart of the home, where a generously proportioned lounge room beckons - a space destined for cherished family moments. With a split system in place, comfort is assured throughout the seasons.

Type : House
Price : \$ 786,000
Land Size : 538 sqm
View : <https://www.jasonrealestate.com.au/sale/vic/north/tullamarine/residential/house/7711430>

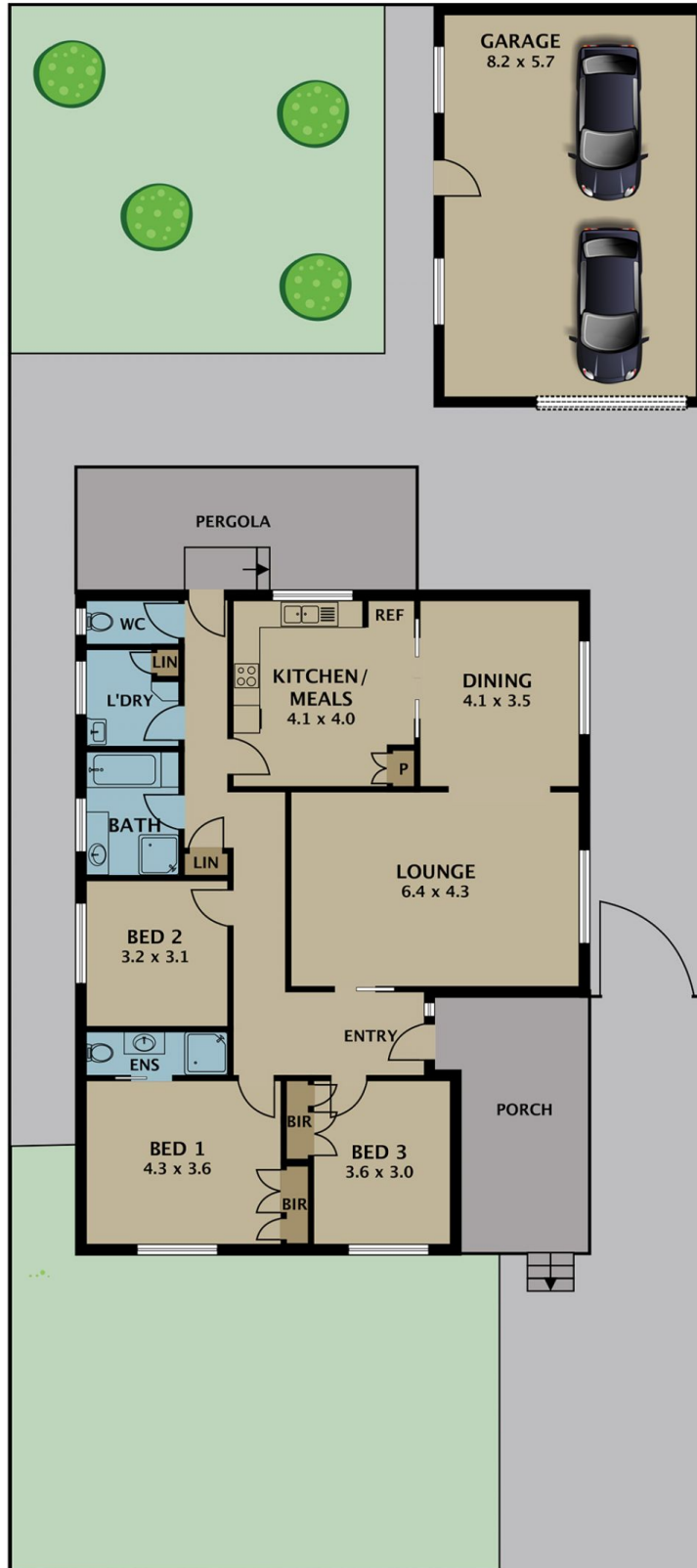


Jason Sassine
03 9338 6411



Joseph Sassine
03 9304 1444

[For full version visit the website](https://www.jasonrealestate.com.au)



Disclaimer. Please note plans are indicative only and not drawn to exact scale. All dimensions are approximate. Potential buyers view the property in person.

28 Shawlands Drive Tullamarine