

29 Quinn Drive Keilor Park VIC



**** NOTE: THIS IS ONLY THE LEVEL 1 OFFICES FOR LEASE, OUTGOINGS PAID BY LANDLORD ****

Steve & Leo Kikyris of Jason Real Estate Commercial is pleased to offer for lease to the public market: Part of 29 Quinn Drive, Keilor Park.

Situated within corporate business park estate of Keilor Park, part of this property has now become available for lease, which includes all the offices. This is your opportunity to secure a large office for fraction of the usual cost.

KEY FEATURES INCLUDE:

* Total Lettable Office Area: 200 m2 (approx)

[For full version visit the website](https://www.jasonrealestate.com.au/lease/vic/north/keilor-park/commercial/offices/7826243)

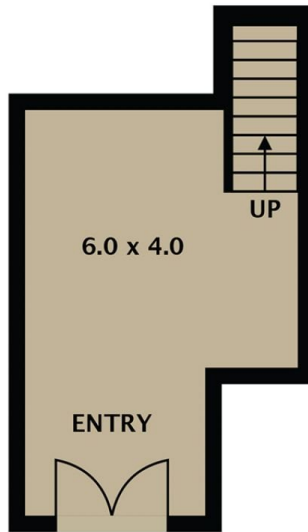
Type : Offices
Price : Contact Agent
Building Size : 200 sqm
Land Size : 200 sqm
View : <https://www.jasonrealestate.com.au/lease/vic/north/keilor-park/commercial/offices/7826243>



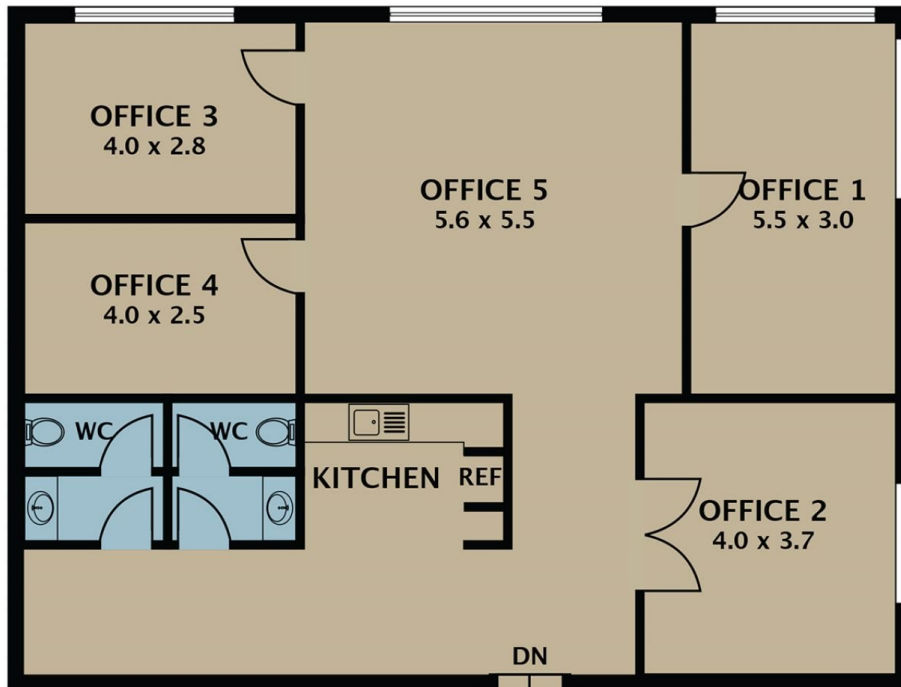
Leo Kikyris
03 9394 1444



Steve Kikyris
03 9394 1444



GROUND FLOOR



FIRST FLOOR

Disclaimer. Please note plans are indicative only and not drawn to exact scale. All dimensions are approximate. Potential buyers view the property in person.

29 Quinn Dr Keillor Park