



224 Mickleham Road Gladstone Park VIC

8 🚗

Leo Kikyris & Steve Kikyris of Jason Commercial are pleased to offer for lease to the public market: 224 Mickleham Road, Gladstone Park.

Be the first to occupy this outstanding facility. Available for lease either as a whole or individually per level or suite; the choice is yours.

Located strategically on Mickleham Road, you have the potential to showcase your business to thousands of vehicles passing by daily.

Ground Floor Area:

*Commercial Building #1, 89.64m²

*Commercial Building #2, 91.18m²

[For full version visit the website](#)

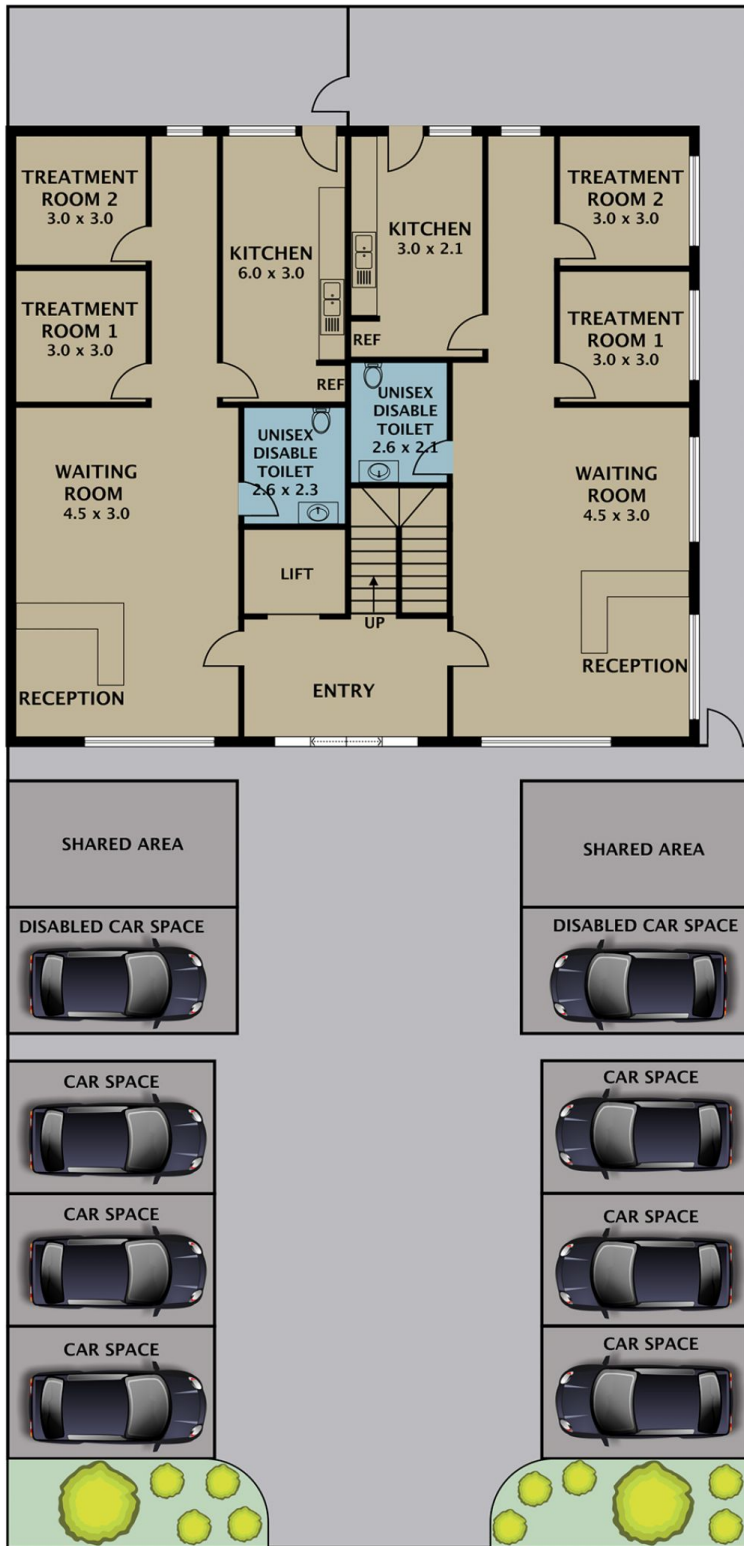
Type : Healthcare
Building Size : 425 sqm
Land Size : 585 sqm
View : <https://www.jasonrealestate.com.au/lease/vic/north/gladstone-park/commercial/healthcare/7830566>



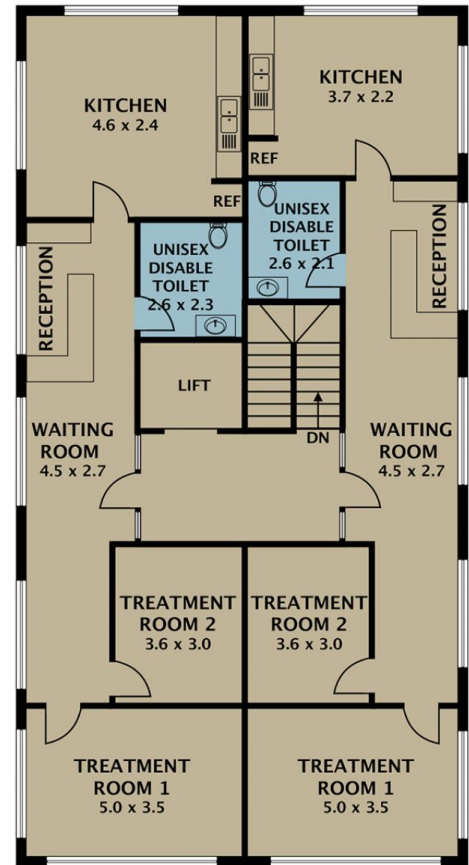
Leo Kikyris
03 9304 1444



Steve Kikyris
03 9304 1444



GROUND FLOOR



FIRST FLOOR

Disclaimer. Please note plans are indicative only and not drawn to exact scale. All dimensions are approximate. Potential buyers view the property in person.

224 Mickleham Road Gladstone Park