

6/41-43 Allied Drive Tullamarine VIC

2 🚗

Leo Kikyris & Steve Kikyris of Jason Commercial are pleased to offer for sale or lease to the public market: 6/41-43 Allied Drive, Tullamarine.

This outstanding facility provides an AFFORDABLE opportunity for any small to medium sized operator to secure an ample sized warehouse/office.

This property is located with easy access to all major arterial roads such as Sharps Road, Keilor Park Drive, Calder Freeway, Western Ring Road, City Link Roll Roads and close proximity to the Melbourne (MEL) and Essendon Fields Airport/s (MEB).

KEY FEATURES INCLUDE:

- * Building Area: 200sqm (Approx)
- * 2 Secure Car Parking Spaces

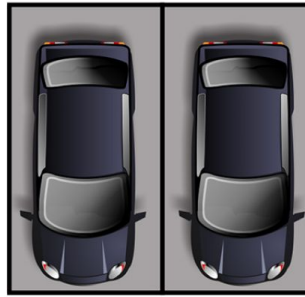
Price : Contact Agent
Building Size : 200 sqm
Land Size : 100 sqm
View : <https://www.jasonrealestate.com.au/sale/vic/north/tullamarine/commercial/industrial/8078083>



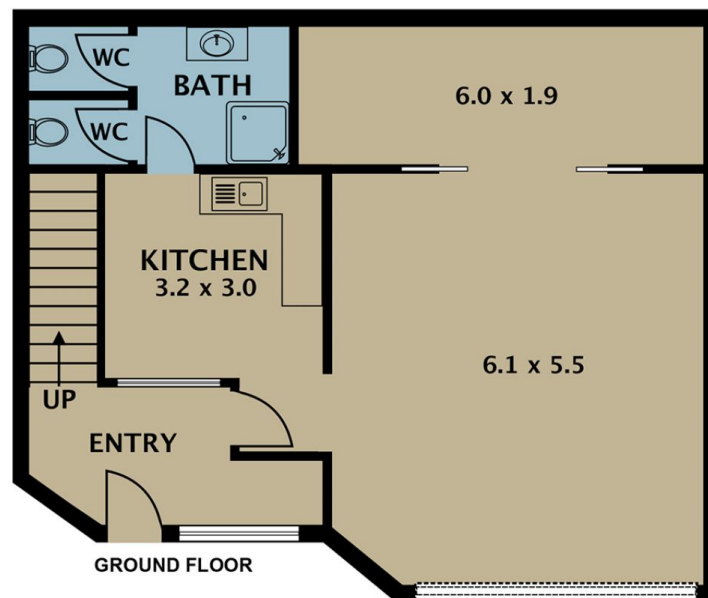
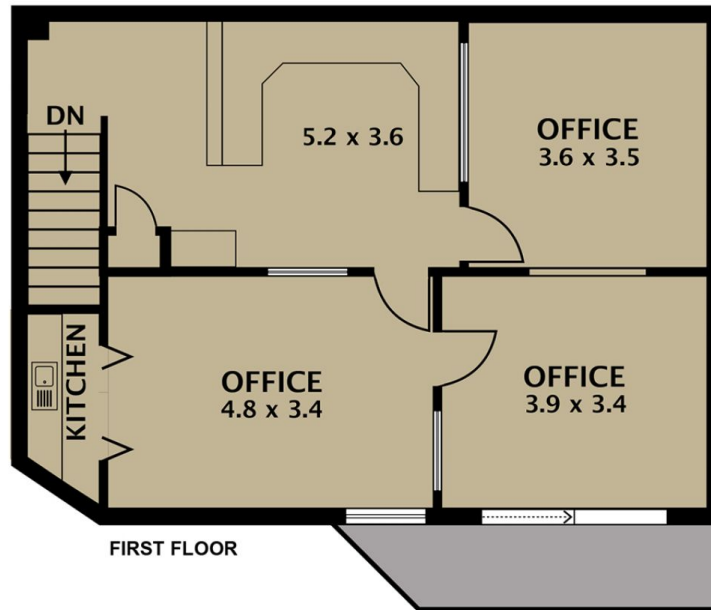
Leo Kikyris
03 9304 1444



Steve Kikyris
03 9304 1444



(NOT IN POSITION)



Disclaimer. Please note plans are indicative only and not drawn to exact scale. All dimensions are approximate. Potential buyers view the property in person.

6/41-43 Allied Drive Tullamarine