



35 Yellowbox Drive Craigieburn VIC

Leo Kikyris & Steve Kikyris of Jason Commercial are pleased to offer for lease to the public market: 35 Yellowbox Drive, Craigieburn.

Be the one of the first to secure this phenomenal opportunity with prime modern office warehouse space directly off the Hume Hwy and moments away from the Craigieburn Bypass and Cooper street.

LOCATION:

- * 5 mins away from Australia Post - Somerton Business Hub
- * 1.3 km away Craigieburn Primary/Secondary College
- * 3 mins away from Craigieburn train Station
- * 6 mins away from Craigieburn Plaza Shopping Ctr

[For full version visit the website](https://www.jasonrealestate.com.au/lease/vic/north/craigieburn/commercial/industrial/8122331)

Type	: Industrial
Price	: Contact Agent
Building Size	: 400 sqm
Land Size	: 506 sqm
View	: https://www.jasonrealestate.com.au/lease/vic/north/craigieburn/commercial/industrial/8122331



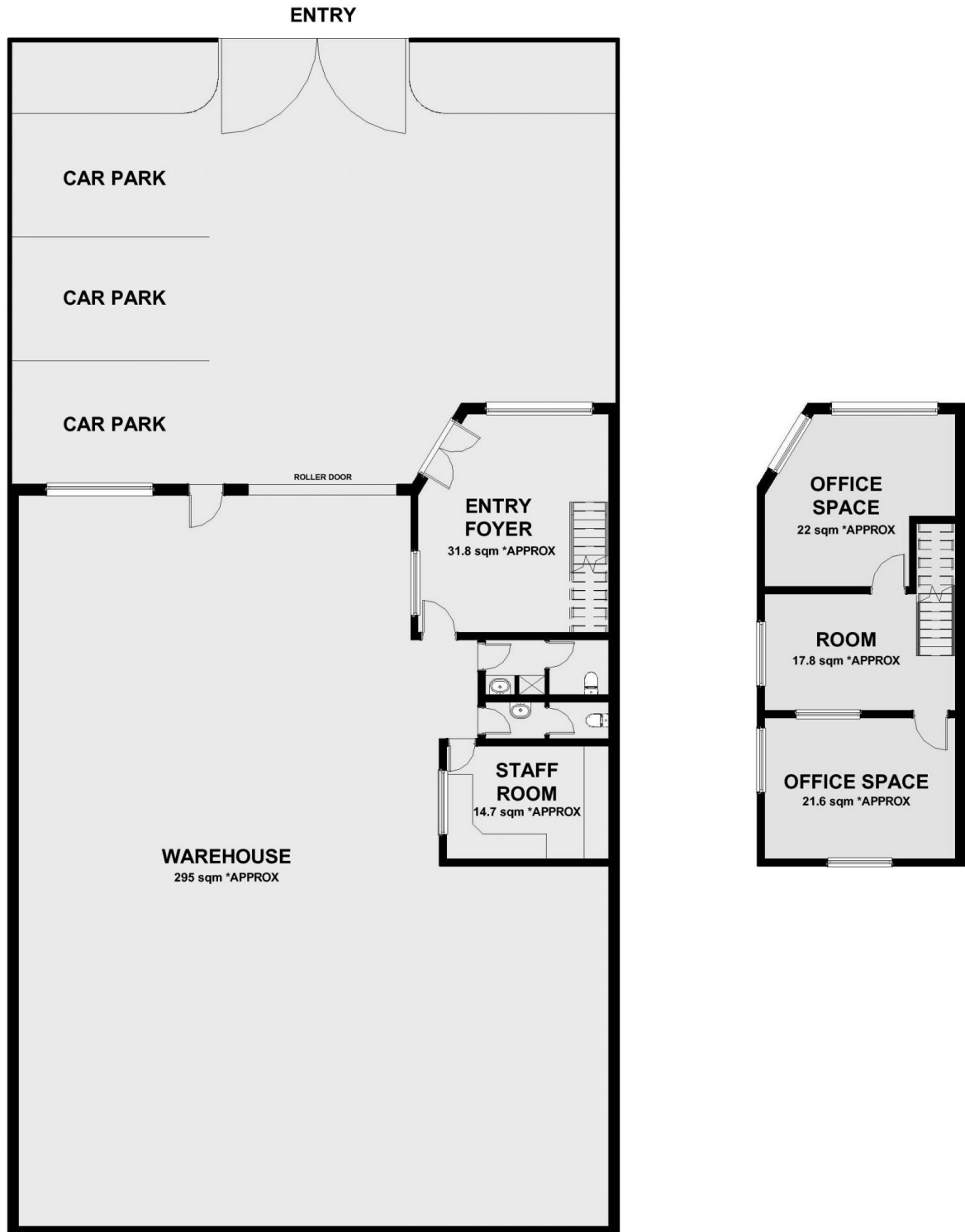
Leo Kikyris
03 9304 1444



Steve Kikyris
03 9304 1444

2/14 SILICON PLACE, TULLAMARINE

APPROX TOTAL BUILDING AREA: 558m²



PLEASE NOTE FLOOR PLANS ARE SHOWN INDICATIVE ONLY AND ARE NOT DRAWN TO EXACT SCALE - BUYERS PLEASE INSPECT PROPERTY IN PERSON