



1/19 Yellowbox Drive Craigieburn VIC

PRIME INDUSTRIAL OPPORTUNITY: HIGH DEMAND LOCATION WAREHOUSE/OFFICE

Leo & Steve Kikyris of Jason Real Estate Commercial are pleased to offer for lease to the public market: 19A Yellowbox Drive, Craigieburn.

This outstanding building is strategically located within the high demand of Craigieburn's "Rivergum Estate" directly off the Hume Hwy, moments away from Craigieburn Bypass, and Cooper street providing excellent access to the Metropolitan Ring Road and beyond to the Tullamarine Freeway, Melbourne Airport and CBD.

KEY FEATURES INCLUDE:

[For full version visit the website](https://www.jasonrealestate.com.au/lease/vic/north/craigieburn/commercial/industrial/8126997)

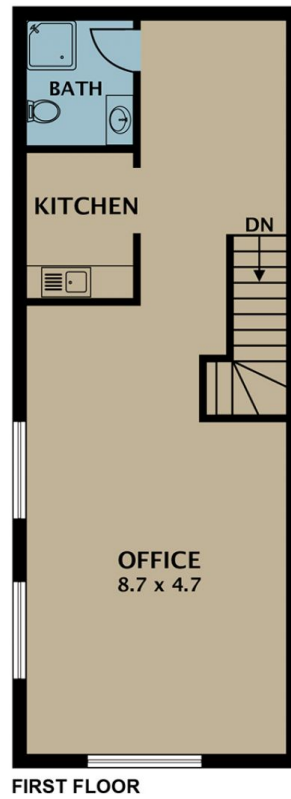
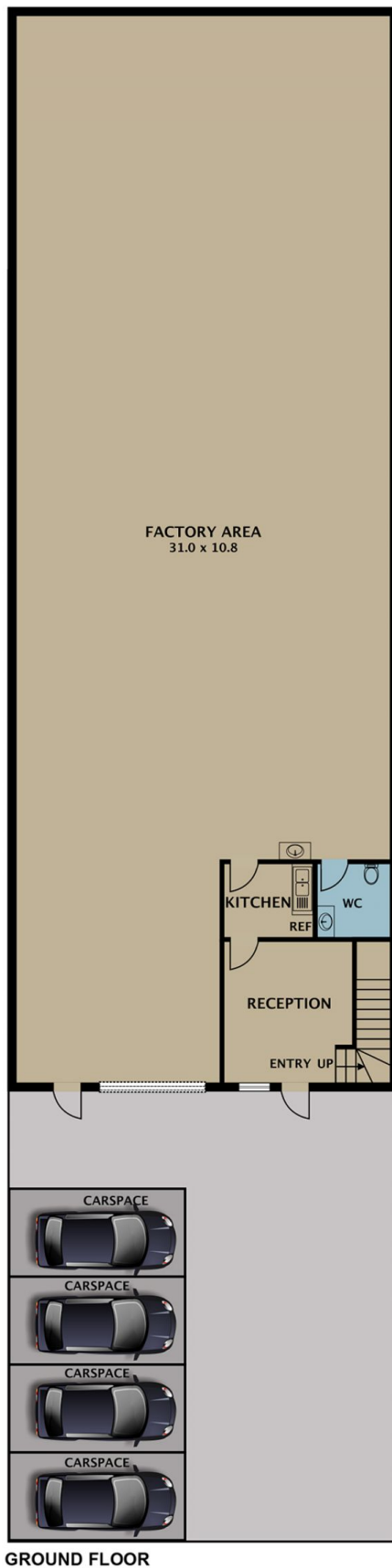
Type	: Industrial
Price	: Contact Agent
Building Size	: 400 sqm
Land Size	: 500 sqm
View	: https://www.jasonrealestate.com.au/lease/vic/north/craigieburn/commercial/industrial/8126997



Leo Kikyris
03 9304 1444



Steve Kikyris
03 9304 1444



Disclaimer. Please note plans are indicative only and not drawn to exact scale. All dimensions are approximate. Potential buyers view the property in person.

16A Yellowbox Dr Craigieburn