

5/8 Commercial Court Tullamarine VIC

4 🚗

Leo Kikyris & Steve Kikyris of Jason Commercial are pleased to offer for lease to the public market: 5/8 Commercial Court, Tullamarine.

Situated within very popular industrial estate, easy access to Calder Freeway, Western Ring Road, and close to Melbourne Airport (Tullamarine).

- AVAILABLE FOR IMMEDIATE MOVE IN
- PRIVATE INSPECTION ONLY
- FOR AN IMMEDIATE INSPECTION CALL US TODAY!

KEY FEATURES INCLUDE:

- * Land area: 450 m2 approx
- * Total building area: 440 m2 approx (which includes

[For full version visit the website](https://www.jasonrealestate.com.au)

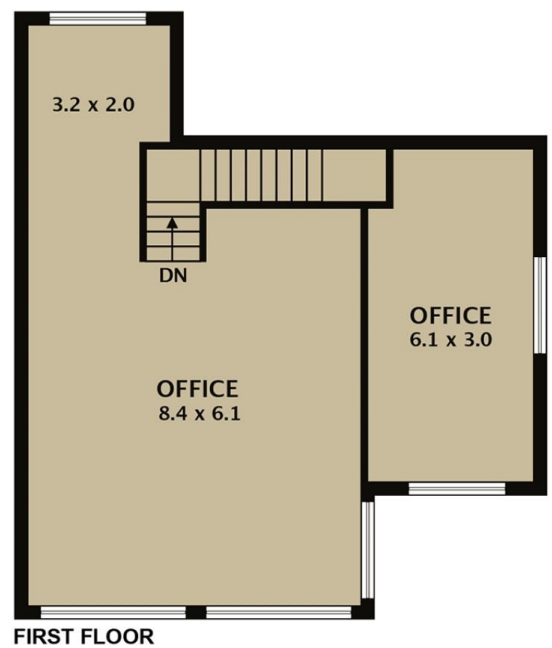
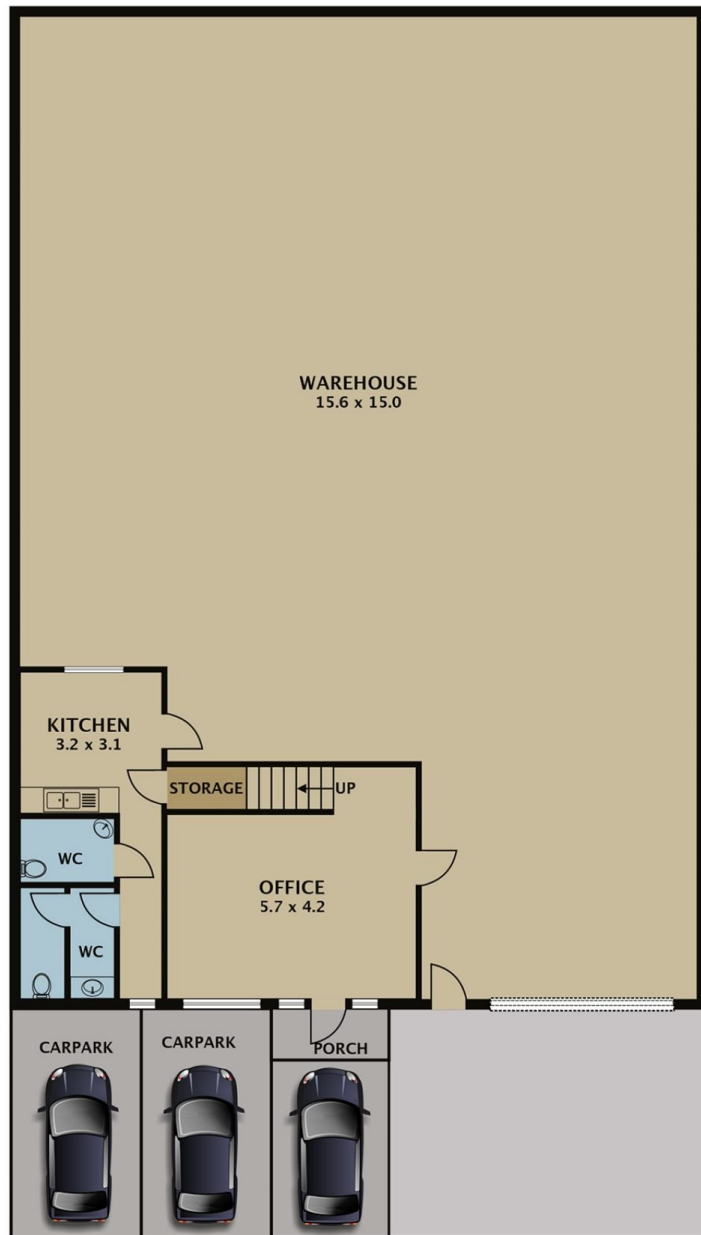
Type : Industrial
Price : Contact Agent
Building Size : 440 sqm
Land Size : 450 sqm
View : <https://www.jasonrealestate.com.au/lease/vic/north/tullamarine/commercial/industrial/8133256>



Leo Kikyris
03 9394 1444



Steve Kikyris
03 9394 1444



Disclaimer. Please note plans are indicative only and not drawn to exact scale. All dimensions are approximate. Potential buyers view the property in person.

5/8 Commercial Ct Tullamarine