



## 10a Warwick Place Tullamarine VIC

2 1 1

This well-presented single-level villa offers the perfect blend of comfort and convenience, located within walking distance to Westfield Shopping Centre and easy access to the nearby tram.

As you enter through the separate entry, you're welcomed by superior solid timber floors that lead to a spacious casual dining area. This area seamlessly connects to a well-appointed kitchen featuring gas hot plates, an under-bench oven, and a rangehood.

The casual dining flows into a large, inviting lounge and living room equipped with split-system heating and cooling, providing year-round comfort. The villa boasts two generously sized bedrooms with mirrored built-in robes and

**Type** : Unit  
**Price** : AUCTION | \$450K - \$470K  
**View** : <https://www.jasonrealestate.com.au/sale/vic/north/tullamarine/residential/unit/8139322>

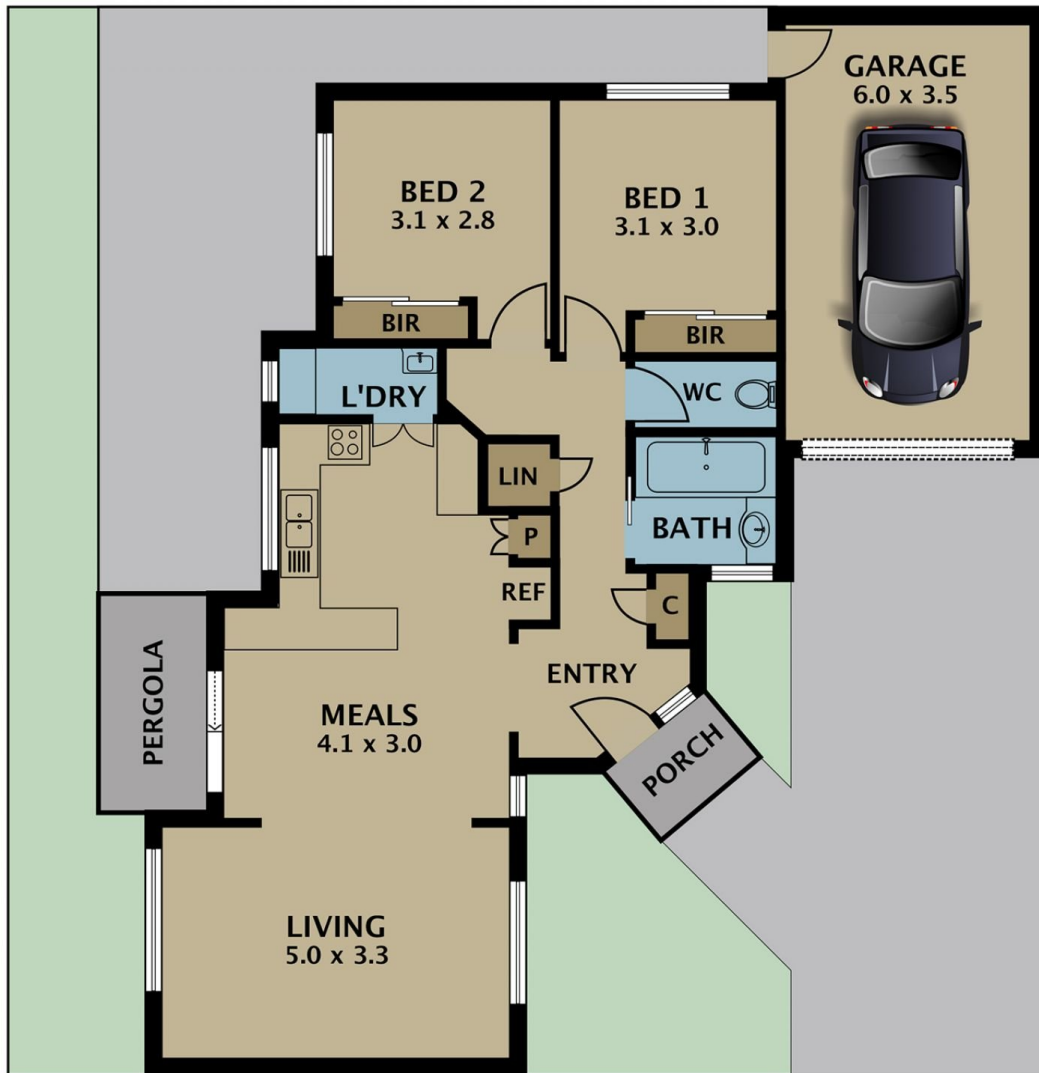


**Jason Sassine**  
03 9338 6411



**Joseph Sassine**  
03 9304 1444

[For full version visit the website](https://www.jasonrealestate.com.au)



Disclaimer. Please note plans are indicative only and not drawn to exact scale. All dimensions are approximate. Potential buyers view the property in person.

## 2/10 Warwick Place Tullamarine