



8 Paltara Close Meadow Heights VIC

4 2 2

Experience the perfect fusion of modern elegance and practical family living in this beautifully renovated 4-bedroom residence, set on a large allotment measuring 697m² approx. Offering exceptional design and luxurious finishes, this home is tailored for comfort and style. Situated in a highly sought-after location, close to all major amenities, it presents an unmatched opportunity for those seeking both convenience and refined living.

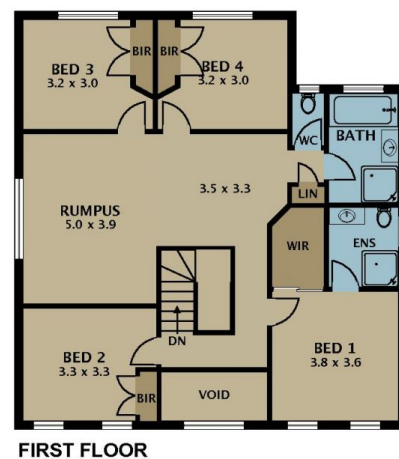
The master suite is a private oasis, complete with a full ensuite and walk-in robes, while all additional bedrooms feature generous built-in robes. A separate study provides an ideal space for work or study, adding to the home's versatile layout.

Type : House
Price : \$810K to \$840K
Land Size : 697 sqm
View : <https://www.jasonrealestate.com.au/sale/vic/north/meadow-heights/residential/house/8154618>



Romeo Sassine
 03 9338 6411

[For full version visit the website](https://www.jasonrealestate.com.au)



Disclaimer. Please note plans are indicative only and not drawn to exact scale. All dimensions are approximate. Potential buyers view the property in person.

8 Paltara Close Meadow Heights