

20/54 Commercial Place Keilor East VIC

2 🚗

Leo Kikyris & Steve Kikyris of Jason Commercial are pleased to offer for lease to the public market: 20/54 Commercial Place, Keilor East

This prime warehouse offers unparalleled access to Melbourne's key arterials, including the Metropolitan Ring Road, Tullamarine Freeway, and Calder Freeway-ensuring seamless connections across the city and beyond. Just minutes from Melbourne Airport, this location is ideal for businesses looking to streamline logistics, expand reach, and enhance efficiency.

Key Features Include:

- * Total building area: 145sqm
- * 2x Car parking

[For full version visit the website](https://www.jasonrealestate.com.au)

Type : Industrial
Price : Contact Agent
Building Size : 145 sqm
Land Size : 107 sqm
View : <https://www.jasonrealestate.com.au/lease/vic/north/keilor-east/commercial/industrial/8177710>



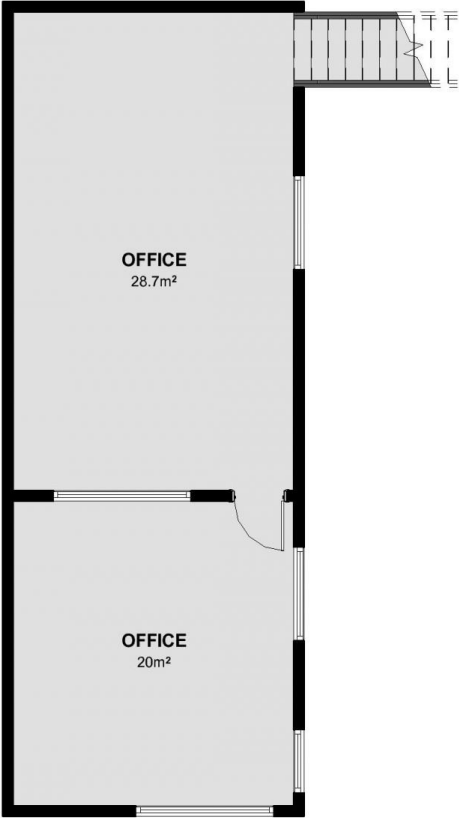
Leo Kikyris
03 9394 1444



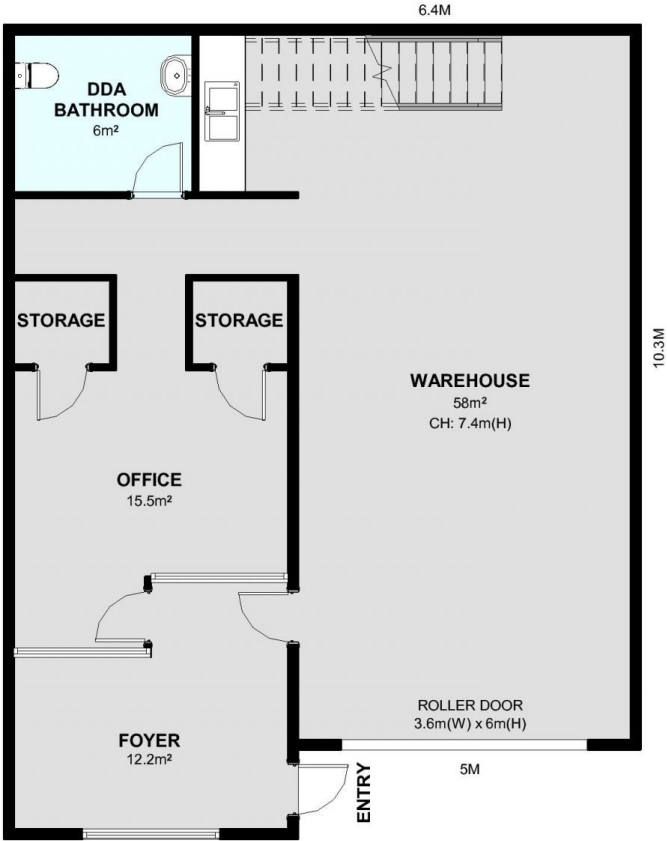
Steve Kikyris
03 9394 1444

20/54 COMMERCIAL PLACE, KEILOR EAST

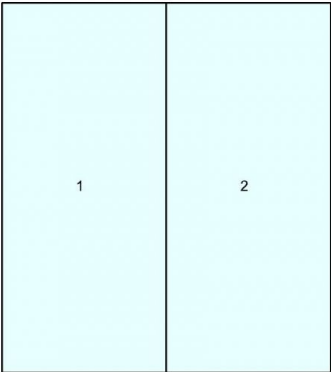
TOTAL BUILDING AREA: 145m²



FIRST FLOOR



GROUND FLOOR



CAR PARKS

PLEASE NOTE FLOOR PLANS ARE SHOWN INDICATIVE ONLY AND ARE NOT DRAWN TO EXACT SCALE - BUYERS PLEASE INSPECT PROPERTY IN PERSON