



## Level 1/Suite 13/785 Pascoe Vale Road Glenroy VIC

Leo & Steve Kikyris of Jason Commercial are pleased to offer for lease to the public market: Level 1, Suite 13/785 Pascoe Vale Road Glenroy.

This is your opportunity to be situated in one of Glenroy's most iconic buildings "Stuarts Corner", within a premier retail location close to long established and reputable businesses. A short stroll away from some great local cafe's, public transport and all-day car parking.

### KEY FEATURES INCLUDE:

- \* Building area: 28 m2 (approx)
- \* Kitchenette
- \* Open plan office
- \* Commercial 1 zone

[For full version visit the website](https://www.jasonrealestate.com.au/lease/vic/north/glenroy/commercial/offices/8186391)

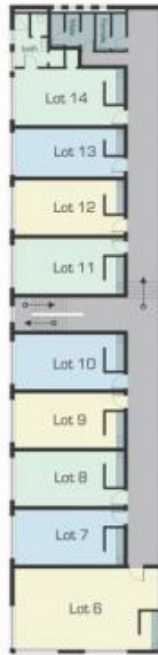
<b>Type</b>	: Offices
<b>Price</b>	: Contact Agent
<b>Building Size</b>	: 28 sqm
<b>Land Size</b>	: 28 sqm
<b>View</b>	: <a href="https://www.jasonrealestate.com.au/lease/vic/north/glenroy/commercial/offices/8186391">https://www.jasonrealestate.com.au/lease/vic/north/glenroy/commercial/offices/8186391</a>



**Leo Kikyris**  
03 9304 1444



**Steve Kikyris**  
03 9304 1444



First Floor

Disclaimer: Please note that plans are illustrative only and shown to exact scale. All dimensions are approximate. Potential buyers/viewers should view the property in person.

First Floor, 785 Pascoe Vale Road Glenroy