



Level 1/Suite 14/785 Pascoe Vale Road Glenroy VIC

Leo & Steve Kikyris of Jason Commercial are pleased to offer for lease to the public market: Level 1, Suite 14/785 Pascoe Vale Road Glenroy.

This is your opportunity to be situated in one of Glenroy's most iconic buildings "Stuarts Corner", within a premier retail location close to long established and reputable businesses. A short stroll away from some great local cafe's, public transport and all-day car parking.

KEY FEATURES INCLUDE:

- * Building area: 40 m2 (approx)
- * Kitchenette
- * Open plan office
- * Commercial 1 zone

[For full version visit the website](https://www.jasonrealestate.com.au/lease/vic/north/glenroy/commercial/offices/8186392)

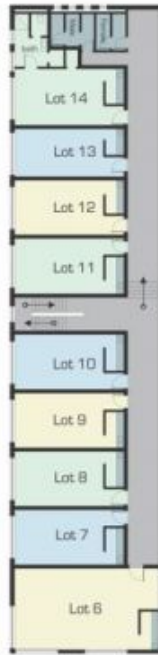
Type	: Offices
Price	: Contact Agent
Building Size	: 28 sqm
Land Size	: 28 sqm
View	: https://www.jasonrealestate.com.au/lease/vic/north/glenroy/commercial/offices/8186392



Leo Kikyris
03 9304 1444



Steve Kikyris
03 9304 1444



First Floor

Disclaimer: Please note that plans are illustrative only and shown to exact scale. All dimensions are approximate. Potential buyers/viewers should view the property in person.

First Floor, 785 Pascoe Vale Road Glenroy